



 LANE SEVEN

WOMENS



# Table of Contents

Pg 23 - LS81000 Crop Tee

Pg 24 - LS82001 Baby Tee

Pg 25 - LS81001 Relaxed Tee

Pg 26 - LS83006 Ribbed Tank

Pg 27 - LS86000GD Urban Crop Tee Garment Dyed

Pg 28 - LS88004 Relaxed Crop Crewneck

Pg 29 - LS88001 Relaxed Crop Hoodie

Pg 30 - LS88003 Relaxed Crop Zip Hoodie

Pg 31 - LS12000 Crop Hoodie



We built our name on the details — fabric, fit, color, construction — perfected over time.

The Womens Collection is no different.

Designed to move with you — from the morning commute to the plans that weren't planned.

FOR THIS.



FOR THE  
DAYS THAT  
DON'T SLOW  
DOWN



LS81000  
Crop Tee



FOR THE  
WALK WITH  
NOWHERE  
TO BE

LS82001  
Baby Tee



FOR THE  
DAY THAT  
STARTS  
EARLY



LS81001  
Relaxed Tee





FOR THE  
WORKOUT  
YOU SHOWED  
UP FOR

LS83006  
Ribbed Tank





FOR THE LONG  
AFTERNOON  
WITH FRIENDS



LS88001  
Relaxed  
Crop Hoodie



FOR THE  
NO REAL  
PLANS  
DAYS



LS88004  
Relaxed  
Crop Crewneck



FOR THE  
LATE NIGHT  
SNACK RUN



LS88003  
Relaxed Crop  
Zip Hoodie



FOR THE  
SLOW  
SUNDAYS

LS12000  
Crop Hoodie





FOR THIS



LS86000GD  
Urban Crop Tee  
Garment Dyed



## LS81000 CROP TEE

### FABRIC

20 Singles  
5.6 oz. (190 GSM)  
100% Combed Cotton

### DETAILS

1x1 rib neck. Reactive dyed. Side-seamed. Shoulder-to-shoulder taping. Double-needle top stitch at sleeve and bottom hem. Short, cropped hem. Tear-away tags. Under 5% shrinkage.

XS-3XL

Relaxed, Crop Fit

### PACKING

12 per pack  
72 pieces per box

### COLORS



BABY BLUE    BUBBLEGUM PINK    BONE



MATCHA    WHITE



## LS82001 BABY TEE

### FABRIC

30 singles  
5.6 oz (190 GSM)

### SOLIDS

100% Combed Cotton

### HEATHER GREY

90% Cotton, 10% Polyester

### DETAILS

1x1 rib fabric. Self fabric neck binding. Side-seamed. Narrow double-needle stitching at neck, sleeve, and bottom hem. Short, fitted. Tear-away tags. Under 7% shrinkage.

XS-3XL

Fitted

### PACKING

12 per pack  
72 pieces per box

### COLORS



BABY BLUE    LILAC    HEATHER GREY



BONE    MAUVE WINE    BLACK



## LS81001 RELAXED TEE

### FABRIC

20 Singles  
5.6 oz. (190 GSM)  
100% Combed Cotton

### DETAILS

1x1 rib neck. Reactive dyed. Side-seamed. Shoulder-to-shoulder taping. Narrow double-needle topstitch at sleeve and bottom hem. Tear-away tags. Under 5% shrinkage.

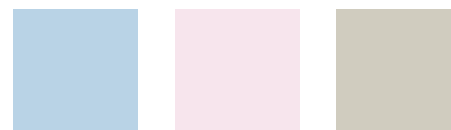
XS-3XL

Relaxed Fit

### PACKING

12 per pack  
72 pieces per box

### COLORS



BABY BLUE

BUBBLEGUM PINK

BONE



MATCHA

WHITE

BLACK



## LS83006 RIBBED TANK

### FABRIC

30 singles  
6.05 oz (205 GSM)

### SOLIDS

97% Combed Cotton, 3% Spandex

### HEATHER GREY

87% Cotton, 10% Polyester, 3% Spandex

### DETAILS

2x1 rib knit. Self-fabric binding at neck and armholes. Double needle top-stitch at bottom hem. Sleeveless. Tear away tags. Under 7% shrinkage.

XS-3XL

Fitted

### PACKING

12 per pack  
72 pieces per box

### COLORS



HEATHER GREY

BONE

BLACK



# LS86000GD

URBAN  
CROP TEE  
GARMENT DYED

## FABRIC

26 Doubles  
7.66 oz (260 GSM)  
100% Combed Cotton Jersey

## DETAILS

Heavy jersey. Garment Dyed. Side-seamed. Double-needle topstitch at sleeve and bottom hem. Shoulder Taping. Tear away tags. Under 5% shrinkage.

XS-3XL

Relaxed, Cropped Fit

## PACKING

12 per pack  
48 pieces per box

## COLORS



# LS88004

RELAXED  
CROP CREWNECK

## FABRIC

3-End Fleece  
9.5 oz (320 GSM)  
80% Cotton, 20% Recycled Polyester

## DETAILS

1x1 rib at neck, sleeve cuff, and waistband. Double-needle topstitch on all seams. Twill back neck tape. Tear-away tags. Under 5% shrinkage.

XS-3XL

Relaxed Fit

## PACKING

6 per pack  
18 pieces per box

## COLORS





# LS88001

## RELAXED CROP HOODIE

**FABRIC**  
3-End Fleece  
9.5 oz (320 GSM)  
80% Cotton, 20% Recycled Polyester

**DETAILS**  
No drawcords. Double-layer hood with single-needle topstitch at the neck seam. 1x1 rib at sleeve cuffs and waistband. Double-needle topstitch at shoulders, armholes, cuffs, and waistband. Twill neck tape, tear-away tags. Under 5% shrinkage.

XS-3XL

Relaxed Fit

**PACKING**  
6 per pack  
18 pieces per box



# LS88003

## RELAXED CROP ZIP HOODIE

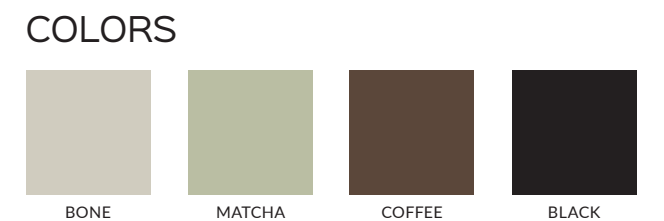
**FABRIC**  
3-End Fleece  
9.5 oz (320 GSM)  
80% Cotton, 20% Recycled Polyester

**DETAILS**  
Side-seamed. YKK #5 with DA8 auto-lock slider. No drawcords. Double-layer hoodie with single-needle topstitch at neck seam, 1x1 rib at cuff and waistband. Double-needle topstitch at shoulder, armhole, cuffs, and waistband. Twill back neck tape, tear-away tags. Under 5% shrinkage.

XS-3XL

Relaxed Fit

**PACKING**  
6 per pack  
24 pieces per box





# LS12000

## CROP HOODIE

### FABRIC

3-End Fleece  
7.05 oz (240 GSM)  
85% Cotton, 15% Recycled Polyester

### DETAILS

Raw edged bottom opening, dyed-to-match flat drawcord, dropped shoulder. Double-needle topstitch on all seams. Tear away tags. Under 5% shrinkage.

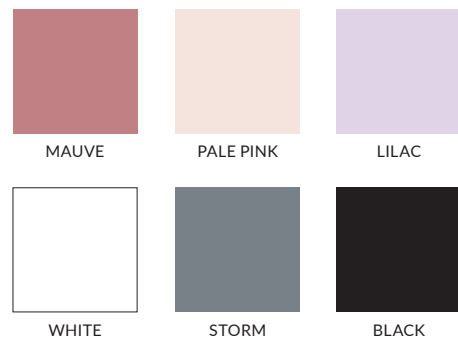
XS-L

Regular Fit

### PACKING

6 per pack  
24 pieces per box

### COLORS



# SIZE CHART

MEASUREMENTS ARE IN INCHES • BASED ON FLAT MEASUREMENTS

Style Number		XS	S	M	L	XL	2XL	3XL	4XL	5XL
<b>LS81000</b> WOMENS CROP TEE	CHEST (1" below armhole)	18	19	20	21	22	23	24	X	X
	LENGTH (Measured from HPS)	17	17.5	18	18.5	19	19.5	20	X	X
<b>LS81001</b> WOMENS RELAXED TEE	CHEST (1" below armhole)	16	17	19	21	23	25	26	X	X
	LENGTH (Measured from HPS)	24	25	26	27	28	29	30	X	X
<b>LS82001</b> WOMENS BABY TEE	CHEST (1" below armhole)	14	15	16	17	18	19	20	X	X
	LENGTH (Measured from HPS)	19.5	20	20.5	21	21.5	22	22.5	X	X
<b>LS83006</b> WOMENS RIBBED TANK	CHEST (1" below armhole)	11	12	13	14	15	16	17	X	X
	LENGTH (Measured from HPS)	22.5	23	23.5	24	24.5	25	26	X	X

MEASUREMENTS ARE IN INCHES • BASED ON FLAT MEASUREMENTS

Style Number		XS	S	M	L	XL	2XL	3XL	4XL	5XL
<b>LS86000GD</b> WOMENS URBAN CROP TEE GARMENT DYED	CHEST (1" below armhole)	18	19	20	21	22	23	24	X	X
	LENGTH (Measured from HPS)	17	17.5	18	18.5	19	19.5	20	X	X
<b>LS88001</b> WOMENS RELAXED CROP HOODIE	CHEST (1" below armhole)	22	23	24	25	26	27	28	X	X
	LENGTH (Measured from HPS)	18	19	20	21	22	23	24	X	X
<b>LS88003</b> WOMENS RELAXED CROP ZIP HOODIE	CHEST (1" below armhole)	22	23	24	25	26	27	28	X	X
	LENGTH (Measured from HPS)	18	19	20	21	22	23	24	X	X
<b>LS88004</b> WOMENS RELAXED CROP CREWNECK	CHEST (1" below armhole)	22	23	24	25	26	27	28	X	X
	LENGTH (Measured from HPS)	18	19	20	21	22	23	24	X	X



**LANE SEVEN**