



# LANE SEVEN

---

2022







# HI, WE'RE LANE SEVEN.

We do blanks better.

## A BETTER SWEATSHIRT.

It starts with better materials, it continues with better design. We thought the fleece available to screenprinters was pretty average. There were many options, but they were all the same, same fabrics, same knitting, same printability.

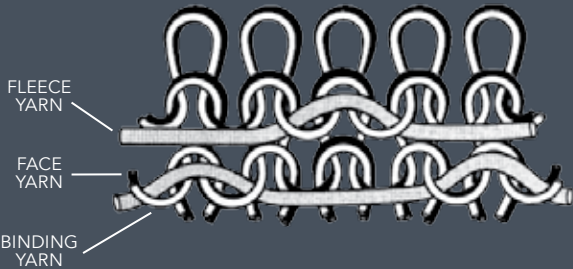
So we decided to make them better, way better.



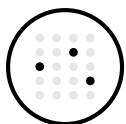
## HOW DID WE DO IT?

When we got here, the only fleece available to screen printers was 2-end knitting...and it wasn't good enough. So, we started manufacturing fleece with a finer 3-end knit, which makes the garment surface easier to print.

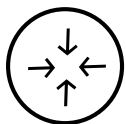
The 3-end process can be more expensive partly due to the addition of a third yarn - but it's so worth it.



LOFTIER & SOFTER  
HAND FEEL



MINIMAL  
DYE MIGRATION



GUARANTEED UNDER  
5% SHRINKAGE



TIGHT KNIT  
100% COTTON FACE

# PRINTWEAR FAVES 2022

3-4 Sustainability

5-6 New & Trending

7-10 Go-To Styles



## TABLE OF CONTENTS

### 11-12 Urban Collection

13-14 Urban Pullover Hoodie - LS16001

15-16 Urban Sweatpants - LS16006

17-18 Urban Heavyweight Tee - LS15001

### 19-20 Vintage Collection

21-22 Vintage Raglan Hoodie - LST004

23-24 Vintage Shorts - LST007

25-26 Vintage Tee - LST002

27-28 Vintage Joggers - LST009

### 29-30 Outerwear

31-32 Crop Hoodie - LS12000

33-34 French Terry Raglan Crewneck - LS13004  
French Terry Hoodie - LS13001

35-36 Premium Pullover Hoodie - LS14001

37-38 Premium Pullover Youth Hoodie - LS14001YH

39-40 Premium Full Zip Hoodie - LS14003

41-42 Premium Crewneck Sweatshirt - LS14004

43-44 Heavyweight Hoodie - LS19001

45-46 Premium Fleece Joggers - LST006

### 47-48 Jersey Collection

49-50 Deluxe Tee - LS15000

51-52 Long Sleeve Crewneck Tee - LS15009

### 53-54 Color Reference

### 55-56 Custom Manufacturing

### 57-58 Social Responsibility

### 59-60 Contact us

### 61-62 Size Chart



SUSTAINABILITY

# EARTH'S CLIMATE IS CHANGING ... WE ARE TOO.

We're committed to designing more sustainable products, with more environmentally-friendly fibers and processes.



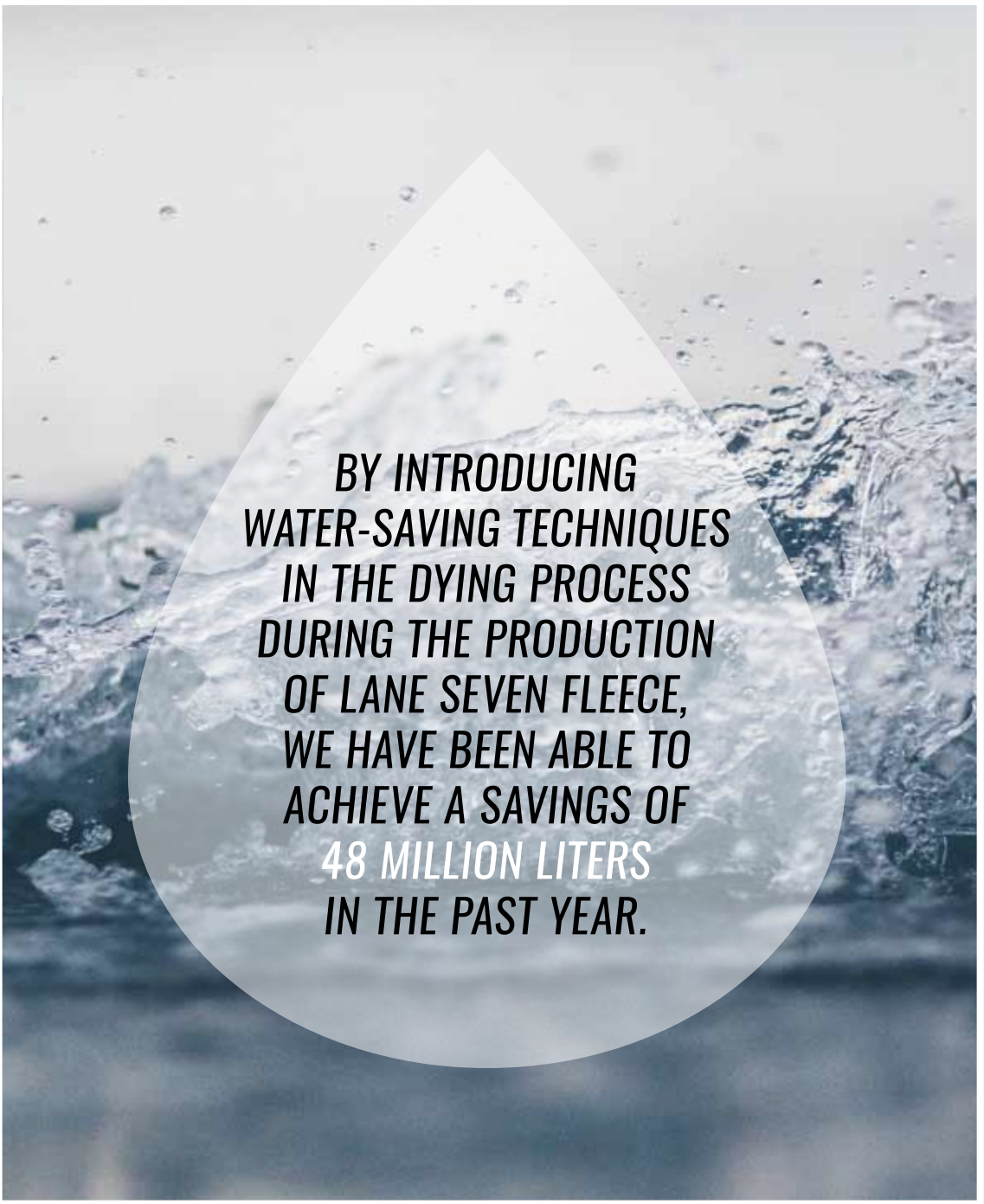
In 2021, we've recycled **18 MILLION** plastic bottles in the knitting of our fleece.



**80%** of our fleece is produced in our plants powered by renewable energy.



For the Future,  
*Lane Seven*



BY INTRODUCING  
WATER-SAVING TECHNIQUES  
IN THE DYING PROCESS  
DURING THE PRODUCTION  
OF LANE SEVEN FLEECE,  
WE HAVE BEEN ABLE TO  
ACHIEVE A SAVINGS OF  
**48 MILLION LITERS**  
IN THE PAST YEAR.



Lane Seven is committed to improving cotton farming practices globally with the Better Cotton Initiative (BCI).





## MEET YOUR NEW FAVORITE HOODIE

**Premium Pullover Hoodie** LS14001 | Color Shown | Sandshell

Super soft, under 5% shrinkage, premium 3-end fleece perfecting it for DTG.



### Urban Heavyweight Tee

LS15001

Colors Shown | Charcoal Heather, Colony Blue

## NEW & TRENDING

2022

People are ready to shed lay-around loungewear and return to the world of statement making looks. Our 2022 collection balances comfort and personality with subtle yet sophisticated details, and fashion-forward cuts and colors - made to move.



### Premium Pullover Hoodie

LS14001

Color Shown | Seafoam

### Premium Crewneck Sweatshirt

LS14004

Color Shown | Chestnut

### Premium Fleece Joggers

LST006

Colors Shown | Seafoam, Chestnut



### Vintage Hoodie

LST004

Colors Shown | Vintage White, Vintage Lake

### Vintage Shorts

LST007

Colors Shown | Cloud Purple, Cloud Black





MIDWEIGHT

3-End Fleece

8.25 oz. (280 GSM)  
80% Cotton  
10% Polyester  
10% Recycled Polyester

**Premium Pullover Hoodie**  
LS14001  
Colors Shown | Army Green, Burgundy

**Premium Fleece Joggers**  
LST006  
Colors Shown | Army Green, Burgundy



**Premium Fleece Hoodie**  
LS14001  
Color Shown | Black



**Premium Full Zip Hoodie**  
LS14003  
Color Shown | Navy



**Premium Crewneck Sweatshirt**  
LS14004  
Color Shown | Oatmeal Heather



# GO-TO STYLE

## LIGHTWEIGHT

### 3-End French Terry

7.4 oz. (250 GSM)  
80% Cotton  
10% Polyester  
10% Recycled Polyester



**French Terry Raglan Crewneck**  
LS13004  
Color Shown | Navy

**French Terry Hoodie**  
LS13001  
Color Shown | Denim Heather

## HEAVYWEIGHT

### 3-End Fleece

10 oz. (340 GSM)  
70% Cotton  
10% Polyester  
20% Recycled Polyester

**Heavyweight Hoodie**  
LS19001  
Color Shown | Paprika





URBAN  
COLLECTION

STREETWEAR ELEVATED



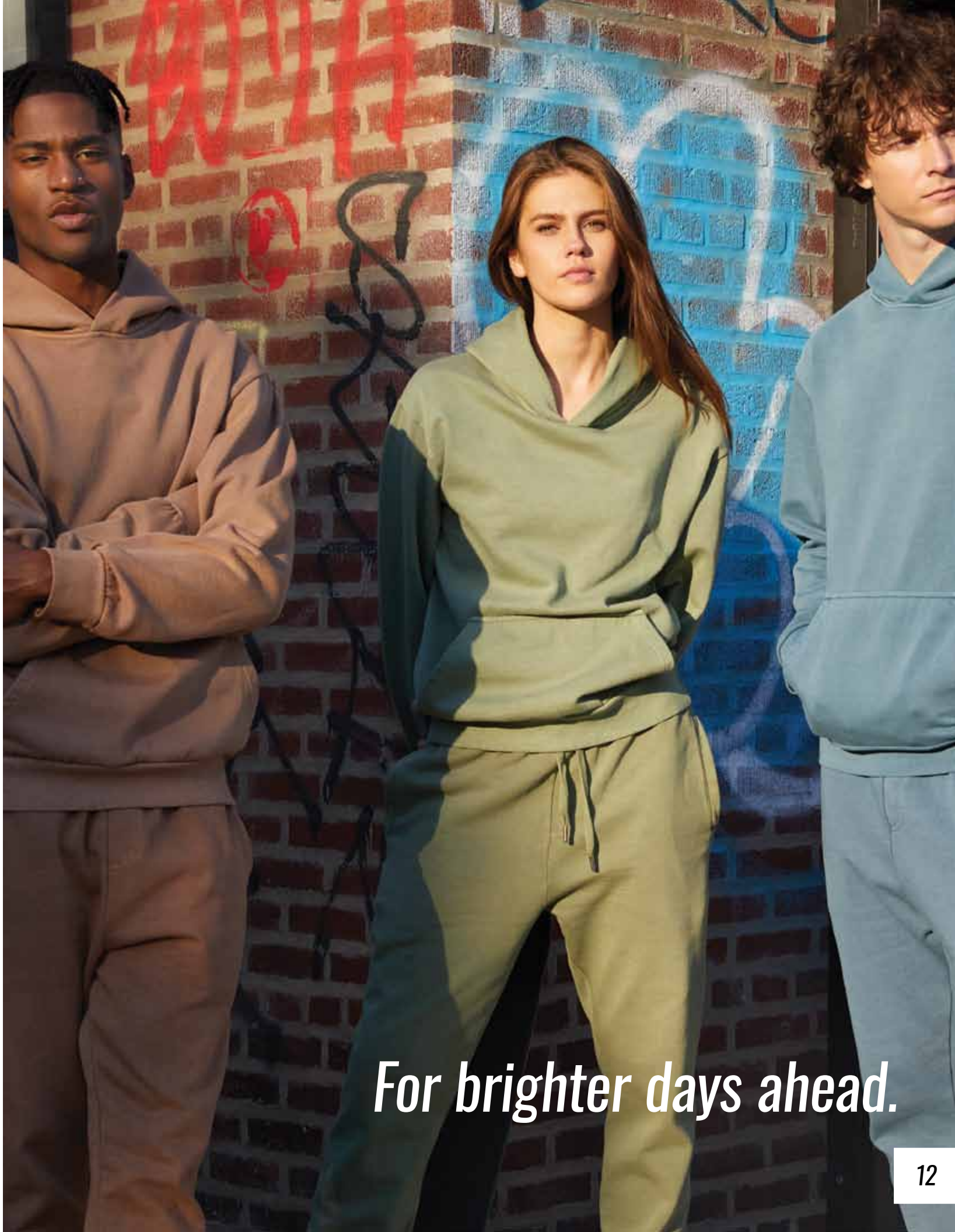
A collection of premium 3-end fleece.

**Urban Pullover Hoodie**

LS16001  
Colors Shown | Lunar Rock, Pebble Blue, Oil Green, Burro

**Urban Sweatpants**

LS16006  
Colors Shown | Lunar Rock, Pebble Blue, Oil Green, Burro



*For brighter days ahead.*



URBAN PULLOVER HOODIE

Fabrication

Cross Grain 3-End Fleece  
10 oz. (340 GSM)  
80% Cotton/20% Polyester



COLOR SHOWN:  
OIL GREEN



BURRO



WHITE



GRAPE ICE



SALMON



PISTACHIO



COLOR SHOWN:  
BLACK



OIL GREEN



LUNAR ROCK



PEBBLE BLUE



PEANUT BUTTER



BLACK

Features

Oversized fit, pigment-dyed (except black & white), fleece lined hood, no drawcords. 26 singles. 100% cotton face.

Burro, Lunar Rock, Oil Green, Pebble Blue - ETA May/June





WHITE



PISTACHIO



GRAPE ICE



SALMON



COLOR SHOWN:  
LUNAR ROCK



### Features

Relaxed fit, pigment-dyed (except black & white). Side pockets with a secret internal pocket with YKK Zipper. Drawcords have metal tipping. SEAMLESS for perfect print along the side of the leg. 26 singles. 100% cotton face.



PEBBLE BLUE



LUNAR ROCK



BLACK



BURRO



OIL GREEN



PEANUT BUTTER

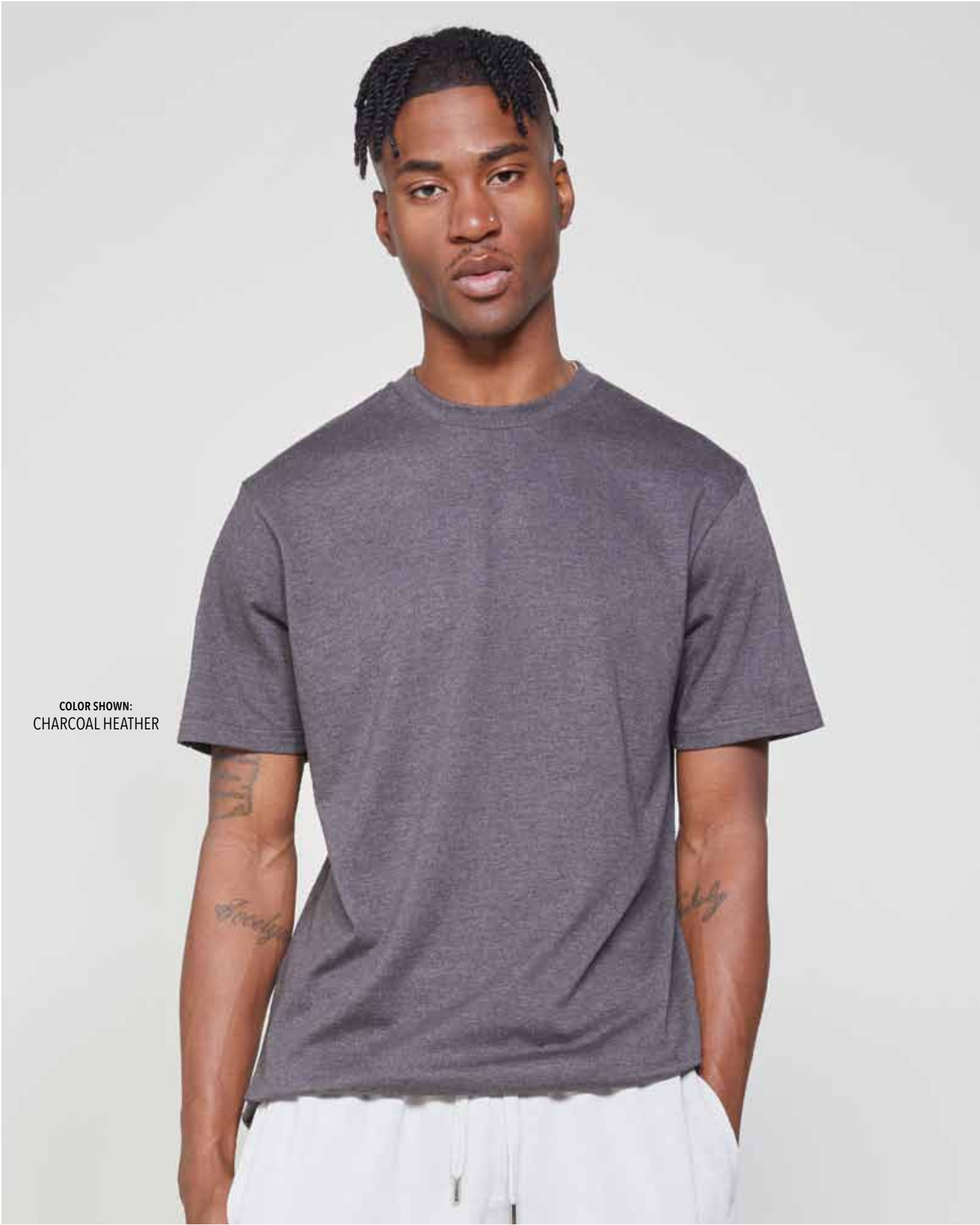
## URBAN SWEATPANTS

### Fabrication

Cross Grain 3-End Fleece  
10 oz. (340 GSM)  
80% Cotton/20% Polyester

Burro, Lunar Rock, Oil Green, Pebble Blue - **ETA May/June**





COLOR SHOWN:  
CHARCOAL HEATHER



COLONY BLUE

BUBBLE GUM PINK



SAGE



CHARCOAL HEATHER



LAVENDER



DUSTY BLUE



WHITE



SPORT GREEN



GREY HEATHER



TOASTED COCONUT



COPPER



NAVY



SEAFOAM



NATURAL



BLACK



MUSHROOM

Features

Side-seamed. Double-needle topstitch at sleeve, shoulders, and bottom hem. Under 6% shrinkage.

URBAN HEAVYWEIGHT TEE

Fabrication

20 Singles  
5.6 oz. (190 GSM)  
100% Ringspun Combed Cotton

**Charcoal Heather**  
60% Cotton/40% Polyester

**Grey Heather**  
90% Cotton/10% Polyester

Bubble Gum Pink, Dusty Blue, Mushroom - **ETA April/May**  
Charcoal Heather, Sport Green, Toasted Coconut - **ETA May/June** Colony Blue - **ETA June/July**



# VINTAGE COLLECTION

**Vintage Raglan Hoodie**  
LST004  
Colors Shown | Vintage White, Vintage Lake

**Vintage Shorts**  
LST007  
Colors Shown | Cloud Purple, Cloud Black



Mineral washed and laundered for superior hand-feel.

**Vintage Raglan Hoodie**  
LST004  
Color Shown | Vintage Orchid

**Vintage Joggers**  
LST009  
Color Shown | Vintage Black







COLOR SHOWN:  
VINTAGE MUSTARD

# VINTAGE RAGLAN HOODIE

**Fabrication**  
8.25 oz. (280 GSM)  
100% Ringspun Cotton



VINTAGE BLACK



VINTAGE DENIM



VINTAGE MUSTARD



VINTAGE OLIVE



VINTAGE ZINC



CLOUD BLACK



CLOUD PURPLE



VINTAGE ORCHID



VINTAGE WHITE



VINTAGE LAKE



VINTAGE CAMEL

## Features

Double-needle stitched on all seams. Dyed to match drawcord. 20 singles. 100% cotton face.

Vintage Lake, Vintage Orchid, Vintage White - **ETA April/May**





COLOR SHOWN:  
CLOUD PURPLE



**Features**

Dyed to match flat drawcords. Back pocket and jersey-lined front pocket. Tapered at the knee. 20 singles. 100% cotton face.

VINTAGE SHORTS

**Fabrication**  
8.25 oz. (280 GSM)  
100% Ringspun Cotton



VINTAGE OLIVE



VINTAGE MUSTARD



VINTAGE DENIM



VINTAGE CAMEL



VINTAGE BLACK



VINTAGE ZINC



CLOUD BLACK



CLOUD PURPLE



# VINTAGE CREWNECK TEE

**Fabrication**  
 30 Singles  
 4.3 oz. (145 GSM)  
 100% Ringspun Cotton

**Features**  
 Side Seamed. Retail Fit. Tight-knit.  
 Double needle topstitch at sleeve,  
 shoulders, and bottom hem.

COLOR SHOWN:  
 VINTAGE DENIM



VINTAGE BLACK



VINTAGE CAMEL



VINTAGE DENIM



VINTAGE MUSTARD



VINTAGE OLIVE



VINTAGE ZINC



CLOUD BLACK



CLOUD PURPLE

Cloud Black, Cloud Purple - **ETA April/May**



VINTAGE JOGGERS

**Fabrication**  
8.25 oz. (280 GSM)  
100% Ringspun Cotton



COLOR SHOWN:  
VINTAGE OLIVE

**Features**  
Side-seamed. Dyed to match flat drawcords. Back pocket and jersey-lined front pocket. 20 singles. 100% cotton face.



VINTAGE MUSTARD



VINTAGE ZINC



VINTAGE DENIM



VINTAGE BLACK



VINTAGE OLIVE



VINTAGE CAMEL



CLOUD BLACK



CLOUD PURPLE



COLOR SHOWN:  
VINTAGE ZINC

Cloud Black, Cloud Purple - **ETA April/May**



OUTERWEAR

**Premium Crewneck Sweatshirt**  
LS14004  
Color Shown | Chestnut

**Premium Pullover Hoodie**  
LS14001  
Colors Shown | Sport Green, Seafoam



**Premium Pullover Hoodie**  
LS14001  
Color Shown | Seafoam

**Premium Fleece Joggers**  
LST006  
Color Shown | Seafoam

**Premium Crewneck Sweatshirt**  
LS14004  
Color Shown | Chestnut







COLOR SHOWN:  
STORM



COLOR SHOWN:  
BLACK

**Features**

Raw hem, dyed-to-match flat drawcord, dropped shoulders. Double-needle topstitch on all seams. Under 5% shrinkage. 30 singles. 100% cotton face.

**CROP HOODIE**



**WATERAWARE**  
PRODUCED USING  
LESS WATER



**FRIENDLYFIBER**  
MADE WITH  
RECYCLED POLYESTER

**Fabrication**

3-End Fleece

7.05 oz. (240 GSM)

85% Ringspun Cotton/15% Recycled Polyester



PALE PINK



STORM



LILAC



BLACK



MAUVE



WHITE

Lilac, Mauve - ETA April

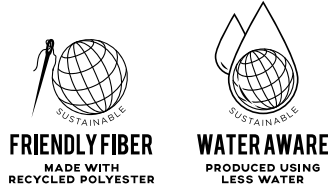


FRENCH TERRY

**Fabrication**  
3-End French Terry  
7.4 oz. (250 GSM)

**Solids**  
80% Cotton/10% Polyester/10% Recycled Polyester

**Heathers**  
60% Cotton/30% Polyester/10% Recycled Polyester



BLACK



GRAPHITE HEATHER



ROYAL HEATHER



NAVY



DENIM HEATHER



WHITE



MAUVE



CHARCOAL HEATHER



COLOR SHOWN:  
NAVY

**Features**  
Double-needle topstitch on all seams. Half-moon patch on the back neck for easy relabelling. Under 5% shrinkage. 30 singles. 100% cotton face.

FRENCH TERRY  
RAGLAN CREWNECK

FRENCH TERRY HOODIE



DENIM HEATHER



GRAPHITE HEATHER



NAVY



MAUVE



CHARCOAL HEATHER



WHITE



ROYAL HEATHER



BLACK

**Features**  
3-Panel hood with fleece lining. Double-needle topstitch on all seams. Dyed to match drawcord with knotted ends and metal eyelets. Half-moon patch on the back neck for easy relabeling. Under 5% shrinkage. 30 singles. 100% cotton face.



COLOR SHOWN:  
DENIM HEATHER

White - ETA May/June

White - ETA May/June

LS13004

LS13001





COLOR SHOWN:  
OATMEAL HEATHER

Features

3-Panel hood with fleece lining. Side-seamed. Double-needle topstitch on all seams. Dyed-to-match drawcords with tipped ends and metal eyelets. Under 5% shrinkage. 30 singles. 100% cotton face.



TRUE ROYAL



BLACK



MUSTARD



GREY HEATHER



ARMY GREEN



PALE PINK



BURGUNDY



SAGE CAMO



WHITE



NAVY



CHESTNUT



CHARCOAL HEATHER



SLATE CAMO



RED



BLUE MIST



SANDSHELL



WATER AWARE  
PRODUCED USING  
LESS WATER



FRIENDLY FIBER  
MADE WITH  
RECYCLED POLYESTER

PREMIUM PULLOVER HOODIE

Fabrication

3-End Fleece  
8.25 oz. (280 GSM)

Solids

80% Cotton/10% Polyester/10% Recycled Polyester

Grey Heather

70% Cotton/20% Polyester/10% Recycled Polyester

Charcoal Heather

60% Cotton/30% Polyester10% Recycled Polyester



OATMEAL HEATHER



PINA COLADA



COLONY BLUE



SEAFOAM



SPORT GREEN



LILAC

Colony Blue, Lilac, Pina Colada, Seafoam, Sport Green - ETA April/May





COLOR SHOWN:  
NAVY

COLOR SHOWN:  
TRUE ROYAL

# PREMIUM YOUTH HOODIE



**Fabrication**

3-End Fleece  
8.25 oz. (280 GSM)

**Solids**

80% Cotton/10% Polyester/10% Recycled Polyester

**Grey Heather**

70% Cotton/20% Polyester/10% Recycled Polyester

**Charcoal Heather**

60% Cotton/30% Polyester/10% Recycled Polyester



BLACK



LILAC



WHITE



GREY HEATHER



CHARCOAL HEATHR



TRUE ROYAL



PINA COLADA

**Features**

2 panel hood with fleece lining. Side-seamed. Double-needle topstitch on all seams. No drawstrings. Kangaroo pocket. Ribbed cuffs and waistband. Under 5% shrinkage. 30 singles. 100% cotton face.



NAVY

Charcoal Heather, Lilac, Pina Colada, True Royal - **ETA April/May**





COLOR SHOWN:  
NAVY

COLOR SHOWN:  
BURGUNDY

# PREMIUM FULL ZIP HOODIE



WATER AWARE  
PRODUCED USING  
LESS WATER



FRIENDLY FIBER  
MADE WITH  
RECYCLED POLYESTER

## Fabrication

3-End Fleece  
8.25 oz. (280 GSM)

### Solids

80% Cotton/10% Polyester/10% Recycled Polyester

### Heathers

70% Cotton/20% Polyester/10% Recycled Polyester

### Charcoal Heather

60% Cotton/30% Polyester/10% Recycled Polyester



CHARCOAL HEATHER



BURGUNDY



NAVY



GREY HEATHER



WHITE



BLACK



TRUE ROYAL



RED



OATMEAL HEATHER

## Features

YKK #5 zipper and DA8 auto-lock slider. Double-needle topstitch on all seams. 3-panel hood with fleece lining. Matching round drawcord with tipped ends and metal eyelets. Under 5% shrinkage. 30 singles. 100% cotton face.

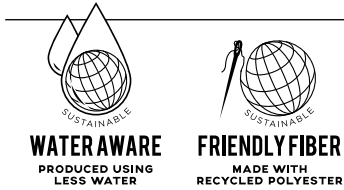


Features

Double-needle topstitch on all seams. 1x1 ribbing at sleeve, cuff, and waistband. Twill neck tape. Under 5% shrinkage. 30 singles. 100% cotton face.

COLOR SHOWN:  
TRUE ROYAL

PREMIUM CREWNECK SWEATSHIRT



Fabrication

3-End Fleece  
8.25 oz. (280 GSM)

Solids

80% Cotton/10% Polyester/10% Recycled Polyester

Heathers

70% Cotton/20% Polyester/10% Recycled Polyester

Charcoal Heather

60% Cotton/30% Polyester/10% Recycled Polyester



BLACK



NAVY



SPORT GREEN



WHITE



TRUE ROYAL



OATMEAL HEATHER



CHARCOAL HEATHER



SEAFOAM



CHESTNUT



PALE PINK



SANDSHELL



GREY HEATHER





**Features**

Double-needle stitch on all seams. 3-panel hood with fleece lining. Dyed to match drawcords with knotted ends and metal eyelets. Under 5% shrinkage. 30 singles. 100% cotton face.



MEERKAT



GREY HEATHER



PAPRIKA



BLACK



MUSHROOM



NAVY



COLOR SHOWN:  
TOASTED COCONUT

**HEAVYWEIGHT PULLOVER SWEATSHIRT**



**WATER AWARE**  
PRODUCED USING  
LESS WATER



**FRIENDLY FIBER**  
MADE WITH  
RECYCLED POLYESTER

**Fabrication**

3-End Fleece  
10 oz. (340 GSM)

**Solids**

70% Cotton/10% Polyester/20% Recycled Polyester

**Heathers**

65% Cotton/15% Polyester/20% Recycled Polyester



STORM



TEAL



WHITE



LAVENDER



SAGE



TOASTED COCONUT

Lavender, Sage, Toasted Coconut - **ETA July/August**





COLOR SHOWN:  
SANDSHELL

**Features**

Gusset insert for drop-crotch feel. Side-seamed. Ribbed bottom cuff and waistband, drawstring at waist. Two side pockets and back pocket. Under 5% shrinkage. 30 singles. 100% cotton face.



GREY HEATHER



SANDSHELL



CHESTNUT



CHARCOAL HEATHER



RED



SEAFOAM



ARMY GREEN



BURGUNDY



BLACK



WHITE

**PREMIUM FLEECE JOGGERS**



**WATER AWARE**  
PRODUCED USING  
LESS WATER



**FRIENDLY FIBER**  
MADE WITH  
RECYCLED POLYESTER

**Fabrication**

3-End Fleece  
8.25 oz. (280 GSM)

**Solids**

80% Cotton/10% Polyester/10% Recycled Polyester

**Grey Heather**

70% Cotton/20% Polyester/10% Recycled Polyester

**Charcoal Heather**

60% Cotton/30% Polyester/10% Recycled Polyester



JERSEY  
COLLECTION

**Urban Tee**  
LS15001  
Colors Shown | Charcoal Heather, Colony Blue



**Urban Tee**  
LS15001  
Colors Shown | Charcoal Heather, Colony Blue







**Features**

Side-seamed. Double-needle topstitch at sleeve, shoulders, and bottom hem. Under 6% shrinkage.

COLOR SHOWN:  
GREY HEATHER



BLACK



MUSHROOM



MEERKAT



PAPRIKA



MUSTARD



NAVY



BLUE MIST



CHESTNUT



LILAC



TEAL



RED



TRUE ROYAL



BURGUNDY



GREY HEATHER



WHITE



ARMY GREEN



PALE PINK

# DELUXE TEE

**Fabrication**  
30 Singles  
4.3 oz. (145 GSM)  
100% Ringspun Combed Cotton

**Grey Heather**  
90% Cotton/10% Polyester



LONG SLEEVE CREWNECK TEE

Fabrication

20 Singles  
5.6 oz. (190 GSM)  
100% Ringspun Combed Cotton

Grey Heather

90% Cotton/10% Polyester



CHESTNUT



PALE PINK



MUSHROOM



GREY HEATHER



MUSTARD



BURGUNDY



ARMY GREEN



COLONY BLUE



BLACK



WHITE



TEAL



PAPRIKA

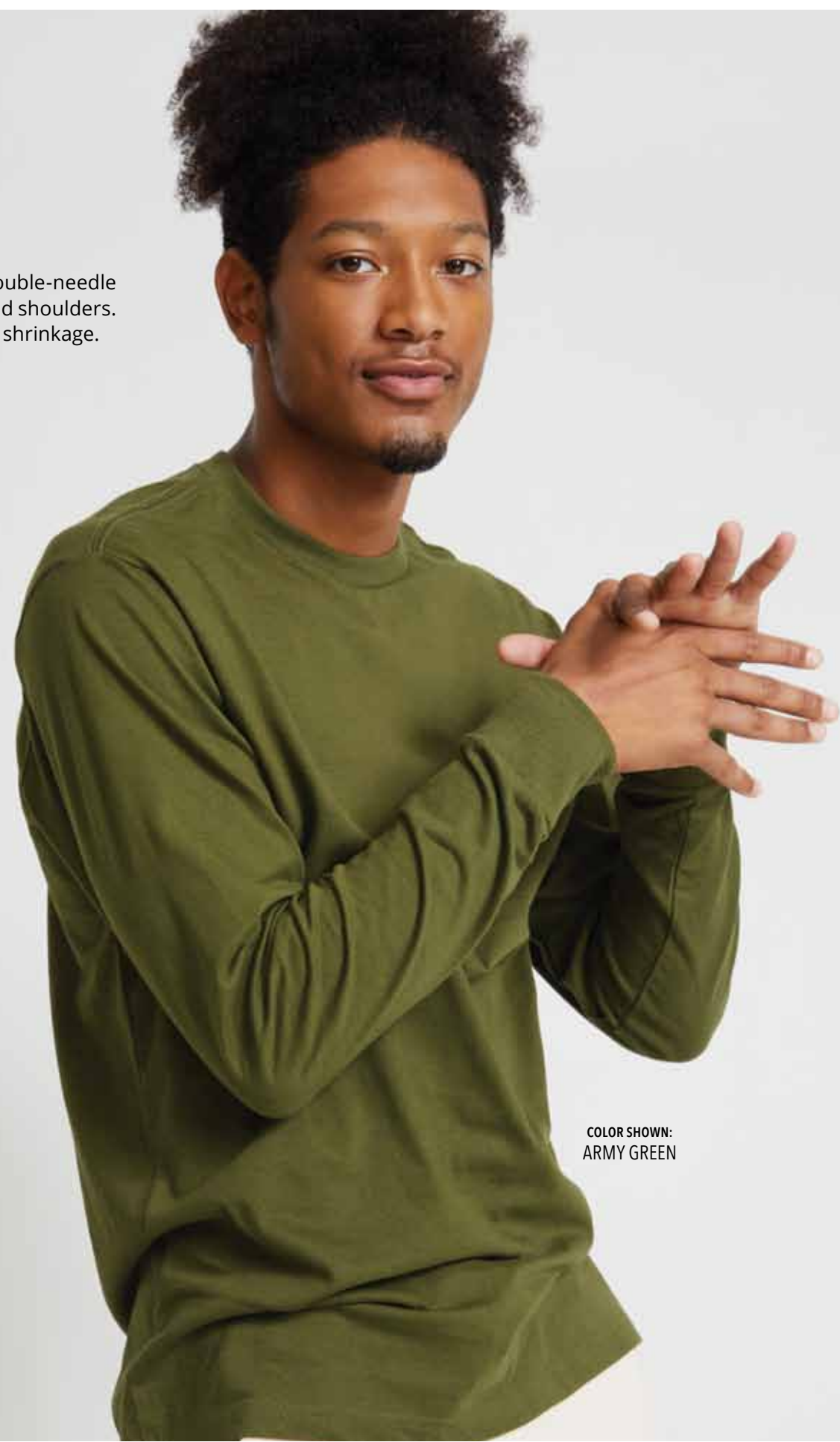


NAVY



TOASTED COCONUT

**Features**  
Side-seamed. Retail fit. Double-needle topstitch at bottom hem and shoulders. Shoulder taping. Under 6% shrinkage.



COLOR SHOWN:  
ARMY GREEN



# COLOR REFERENCE

ARMY GREEN	BLACK	BLUE MIST	BUBBLE GUM PINK
BURGUNDY	BURRO	CHARCOAL HEATHER	CHESTNUT
CLOUD BLACK	CLOUD PURPLE	COLONY BLUE	COPPER
DENIM HEATHER	DUSTY BLUE	GRAPE ICE	GRAPHITE HEATHER
GREY HEATHER	LAVENDER	LILAC	LUNAR ROCK
MAUVE	MEERKAT	MUSHROOM	MUSTARD
NATURAL	NAVY	OATMEAL HEATHER	OIL GREEN
PALE PINK	PAPRIKA	PEANUT BUTTER	PEBBLE BLUE

PINA COLADA	PISTACHIO	RED	ROYAL HEATHER
SAGE	SAGE CAMO	SALMON	SANDSHELL
SEAFOAM	SLATE CAMO	SPORT GREEN	STORM
TEAL	TOASTED COCONUT	TRUE ROYAL	VINTAGE BLACK
VINTAGE CAMEL	VINTAGE DENIM	VINTAGE LAKE	VINTAGE MUSTARD
VINTAGE OLIVE	VINTAGE ORCHID	VINTAGE WHITE	VINTAGE ZINC
WHITE			



# CUSTOM MANUFACTURING

From development to delivery.



## DESIGN

Our goal is to help bring your concept from design to final product. We offer many customizations to help you do that, including:

- Sourcing Fabrications
- Printing & Embroidery
- Custom Colors
- Trims
- Labeling & Packaging

## LEAD TIMES

Our lead times are competitive and our team will work with you to meet your delivery needs. Our factories are vertically integrated, and you will have full visibility on production stages. Lead times can also depend on the product design and quantity.

We are here to bring your vision to life and maintain great efficiency to make sure you receive your products in a timely manner.



## MINIMUMS

Minimums are based on custom style and fabrication offered.

You have the flexibility to order as many quantities as you like. For more details Speak to Lane Seven Rep for more details.



## PRICE

We have strong relationships with our factories, and as a result, we have an edge on quality, consistency, and can offer you the best prices in the market.



## SOCIAL RESPONSIBILITY

### Better Blanks In a Better Way

We have stricter than industry standard quality checks in place, all of our manufacturing is done in vertically integrated, ethically responsible and socially compliant factories, so you can rest easy knowing you are delivering only the best to your customer.



Lane Seven Apparel is committed to maintaining and upholding responsible workplace and environmental standards. We only work with partners who have our shared values of a humane and safe workplace and all of our factories are WRAP certified. WRAP certifications are awarded based on both internationally and nationally accepted humane workplace standards, local laws, and ethical manufacturing regulations.

### What is WRAP?

WRAP (Worldwide Responsible Accredited Production) is a globally recognized, independent 3rd party certifying body whose mission is to promote ethical, humane and lawful conditions and practices in all manufacturing facilities. Companies accepted into the WRAP organization go through an extensive application process in which manufacturing facilities, working environments, and worker's rights are inspected and approved by the WRAP association.

### What Principles Does the WRAP Certification Include?

- Human resources management
- Health and safety standards
- Environmental and eco-friendly practices
- Legal compliance including import/export, customs compliance and security standards







#### CORPORATE OFFICE / SALES / WAREHOUSE

5082 4th Street,  
Irwindale, CA. 91706

Tel: 562.584.5255  
Fax: 562.375.6667

[www.lanesevenapparel.com](http://www.lanesevenapparel.com)  
[@lane7apparel](https://www.instagram.com/lane7apparel)

ASI #: 66246  
PPAI #: 630869

You can also find us at:





## SIZE SPECIFICATION SHEET

MEASUREMENTS ARE IN INCHES, BASED ON FLAT MEASUREMENTS

Style Number		XS	S	M	L	XL	2XL	3XL	4XL
LS12000 CROP HOODIE	CHEST (1" below armhole)	20	22	24	26	X	X	X	X
	LENGTH (Measured from HPS)	17.5	18.5	19.5	20.5	X	X	X	X
LS13001 FRENCH TERRY HOODIE	CHEST (1" below armhole)	19.75	20.75	21.75	22.75	23.75	24.75	25.75	X
	LENGTH (Measured from HPS)	25.5	26.5	27.5	28.5	29.5	30.5	31.5	X
LS13004 FRENCH TERRY RAGLAN CREWNECK	CHEST (1" below armhole)	19.5	20.5	21.5	22.5	23.5	24.5	25.5	X
	LENGTH (Measured from HPS)	25.5	26.5	27.5	28.5	29.5	30.5	31.5	X
LS14001 PREMIUM PULLOVER HOODIE	CHEST (1" below armhole)	18	20	22	24	26	28	30	32
	LENGTH (Measured from HPS)	26	27	28	29	30	31	32	33
*4XL only available in select colors									
LS14001YH PREMIUM YOUTH PULLOVER HOODIE	CHEST (1" below armhole)	14	16	18	20	22	X	X	X
	LENGTH (Measured from HPS)	20	21	23	25	27	X	X	X
LS14003 PREMIUM FULL ZIP HOODIE	CHEST (1" below armhole)	18	20	22	24	26	28	30	X
	LENGTH (Measured from HPS)	26	27	28	29	30	31	32	X
LS14004 PREMIUM CREWNECK SWEATSHIRT	CHEST (1" below armhole)	18	20	22	24	26	28	30	X
	LENGTH (Measured from HPS)	26	27	28	29	30	31	32	X
LS15000 DELUXE TEE	CHEST (1" below armhole)	16	18	20	22	24	26	28	30
	LENGTH (Measured from HPS)	27	28	29	30	31	32	33	34
*4XL only available in select colors									
LS15001 URBAN HEAVYWEIGHT TEE	CHEST (1" below armhole)	16.5	18.5	20.5	22.5	24.5	26.5	28.5	30.5
	LENGTH (Measured from HPS)	28	29	30	31	32	33	34.5	35.5
*4XL only available in select colors									

Please note that the above sizing charts are subject to change.  
For more detailed information, please contact a Lane Seven Customer Service Representative.

## SIZE SPECIFICATION SHEET

MEASUREMENTS ARE IN INCHES, BASED ON FLAT MEASUREMENTS

Style Number		XS	S	M	L	XL	2XL	3XL	4XL
LS15009 LONG SLEEVE CREWNECK TEE	CHEST (1" below armhole)	17	18	20	22	24	26	28	X
	LENGTH (Measured from HPS)	27.5	28.5	29.5	30.5	31.5	32.5	33.5	X
LS16001 URBAN PULLOVER HOODIE	CHEST (1" below armhole)	18	20	22	24	26	28	30	X
	LENGTH (Measured from HPS)	26	27	28	29	30	31	32	X
LS16006 URBAN SWEATPANTS	WAIST	28	30	32	34	36	38	40	X
	INSEAM	29	29	29	29	29	29	29	X
	OUTSEAM	40.5	41	41.5	42	42.5	43	43.5	X
LS19001 HEAVYWEIGHT PULLOVER HOODIE	CHEST (1" below armhole)	20.5	21	23	24.5	26.5	27.5	28.5	X
	LENGTH (Measured from HPS)	27.5	28.5	29.5	30.5	31.5	32.5	33.5	X
LST002 VINTAGE CREWNECK TEE	CHEST (1" below armhole)	16	18	20	22	24	26	28	X
	LENGTH (Measured from HPS)	27	28	29	30	31	32	33	X
LST004 VINTAGE RAGLAN HOODIE	CHEST (1" below armhole)	18	20	22	24	26	28	30	X
	LENGTH (Measured from HPS)	26	27	28	29	30	31	32	X
LST006 PREMIUM FLEECE JOGGER	WAIST	28	30	32	34	36	38	40	X
	INSEAM	28	29	30	31	32	33	34	X
	OUTSEAM	38	39	40	41	42	43	44	X
LST007 VINTAGE SHORTS	WAIST	29	31	33	35	37	39	41	X
	INSEAM	9	9	9.5	9.5	10	10	10.5	X
LST009 VINTAGE JOGGER	WAIST	28	30	32	34	36	38	40	X
	INSEAM	28	29	30	31	32	33	34	X
	OUTSEAM	38	39	40	41	42	43	44	X

Please note that the above sizing charts are subject to change.  
For more detailed information, please contact a Lane Seven Customer Service Representative.



