



2024



LANE SEVEN





# HI, WE'RE LANE SEVEN.

We do blanks better.

## A BETTER SWEATSHIRT.

It starts with better materials, it continues with better design. We thought the fleece available to screenprinters was pretty average. There were many options, but they were all the same, same fabrics, same knitting, same printability.

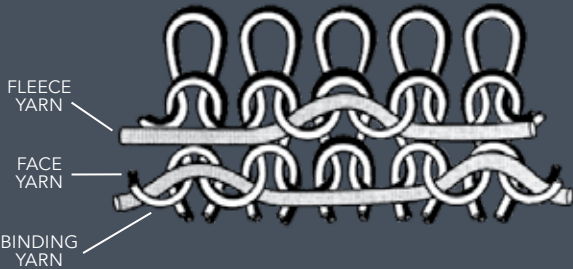
So we decided to make them better, way better.



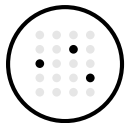
### HOW DID WE DO IT?

When we got here, the only fleece available to screen printers was 2-end knitting...and it wasn't good enough. So, we started manufacturing fleece with a finer 3-end knit, which makes the garment surface easier to print.

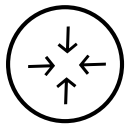
The 3-end process can be more expensive partly due to the addition of a third yarn - but it's so worth it.



LOFTIER & SOFTER  
HAND FEEL



MINIMAL  
DYE MIGRATION



GUARANTEED UNDER  
5% SHRINKAGE



TIGHT KNIT  
100% COTTON FACE

## TABLE OF CONTENTS

- 3-4 Sustainability
- 5-6 New & Trending
- 7-10 Go-To Styles
- 11-12 Urban Collection
- 13-14 Urban Heavy Tee - LS16005
- 15-16 Urban Crewneck Sweatshirt - LS16004
- 17-18 Urban Pullover Hoodie - LS16001
- 19-20 Urban Sweatpants - LS16006
- 21-22 Heavyweight Collection
- 23-24 Heavyweight Tee - LS15001
- 25-26 Heavyweight Long Sleeve Tee - LS15009
- 27-28 Heavyweight Pullover Hoodie - LS19001
- 29-30 Vintage Collection
- 31-32 Vintage Tee - LST002
- 33-34 Vintage Raglan Hoodie - LST004
- 35-36 Vintage Joggers - LST009
- 37-38 Outerwear
- 39-40 Crop Hoodie - LS12000
- 41-42 French Terry Raglan Crewneck - LS13004
- French Terry Hoodie - LS13001
- 43-46 Premium Pullover Hoodie - LS14001
- 47-48 Premium Youth Pullover Hoodie - LS14001YH
- 49-50 Premium Full Zip Hoodie - LS14003
- 51-52 Premium Crewneck Sweatshirt - LS14004
- 53-54 Future Fleece Hoodie - LS18002
- 55-56 Premium Fleece Joggers - LST006
- 57-58 Jersey Collection
- 59-60 Deluxe Tee - LS15000
- 61-62 Deluxe CVC Tee - LS15000CVC
- 63-64 Color Reference
- 65-66 Custom Manufacturing
- 67-68 Social Responsibility
- 69-70 Contact Us
- 71-72 Size Specs



# EARTH’S CLIMATE IS CHANGING ... WE ARE TOO.

We’re committed to designing more sustainable products, with more environmentally-friendly fibers and processes.



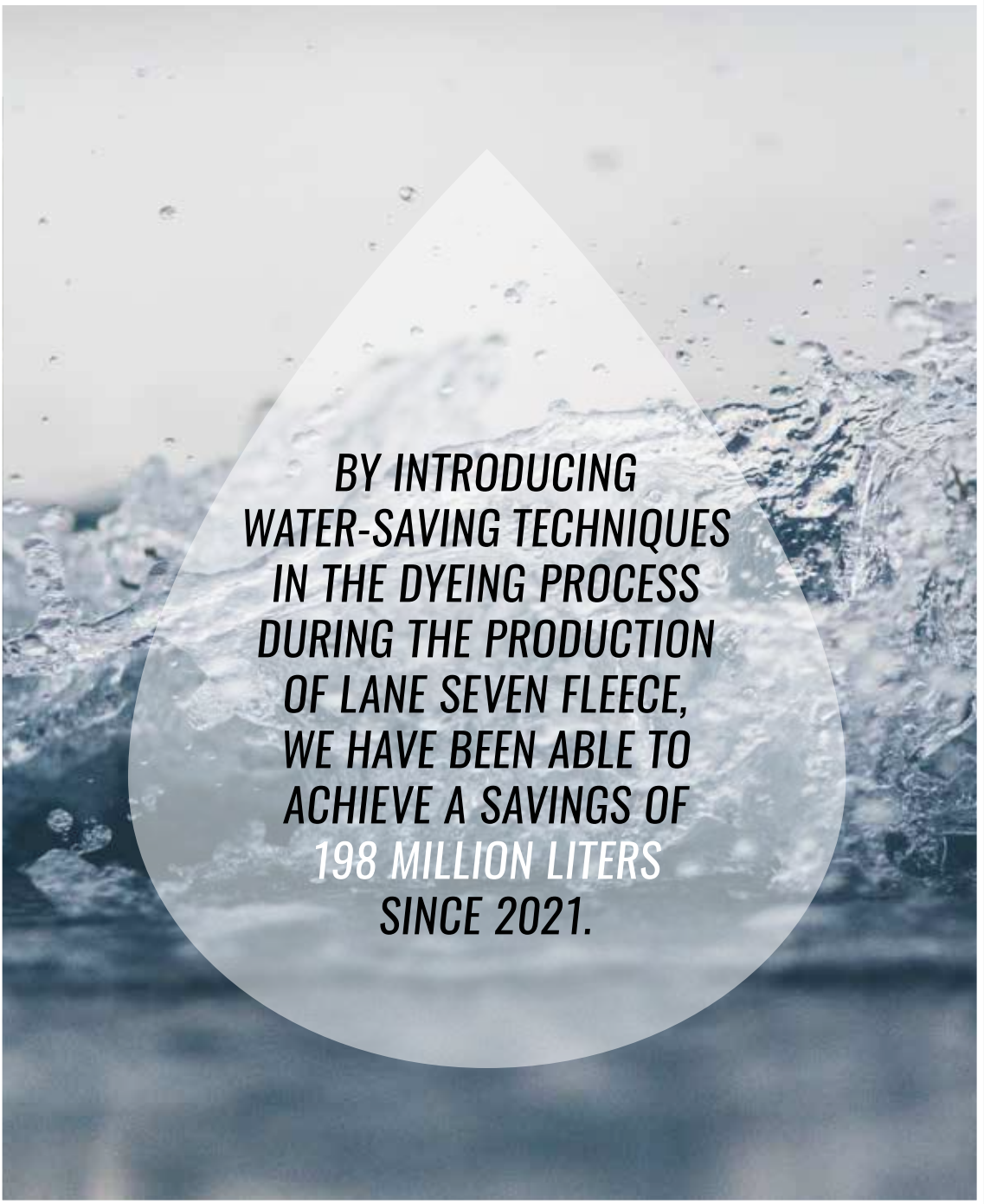
Since 2021, we’ve recycled **44 MILLION** plastic bottles in the knitting of our fleece.



**80%** of our fleece is produced in our plants powered by renewable energy.



For the Future,  
*Lane Seven*



BY INTRODUCING  
WATER-SAVING TECHNIQUES  
IN THE DYEING PROCESS  
DURING THE PRODUCTION  
OF LANE SEVEN FLEECE,  
WE HAVE BEEN ABLE TO  
ACHIEVE A SAVINGS OF  
**198 MILLION LITERS**  
SINCE 2021.



Lane Seven is committed to improving cotton farming practices globally with the Better Cotton Initiative (BCI).





**MEET YOUR NEW FAVORITE HOODIE**

**Premium Pullover Hoodie**  
LS14001 | Sage Camo

Super soft, under 5% shrinkage, premium 3-end fleece perfecting it for DTG.



**Vintage Raglan Hoodie**  
LST004  
Color Shown: Cloud Purple



**Urban Heavy Tee**  
LS16005  
Color Shown: Oil Green



**Urban Pullover Hoodie**  
LS16001  
Color Shown: Salmon

**Urban Sweatpants**  
LS16006  
Color Shown: Salmon

**NEW & TRENDING**  
2024

People are ready to shed lay-around loungewear and return to the world of statement making looks. The Urban Collection balances comfort and personality with subtle yet sophisticated details, and fashion-forward cuts and colors – made to move.



# GO-TO STYLES



## MIDWEIGHT

### 3-End Fleece

8.25 oz. (280 GSM)  
80% Cotton  
20% Recycled Polyester

#### Premium Pullover Hoodie

LS14001  
Color Shown: Seafoam

#### Premium Fleece Joggers

LST006  
Color Shown: Seafoam

#### Premium Crewneck Sweatshirt

LS14004  
Color Shown: Chestnut

#### Premium Fleece Joggers

LST006  
Color Shown: Chestnut



#### Premium Pullover Hoodie

LS14001  
Color Shown: Black



#### Premium Full Zip Hoodie

LS14003  
Color Shown: Navy



#### Premium Crewneck Sweatshirt

LS14004  
Color Shown: Sports Green



# GO-TO STYLES

## LIGHTWEIGHT

### 3-End French Terry

7.4 oz. (250 GSM)  
80% Cotton  
20% Recycled Polyester



**French Terry Raglan Crewneck**  
LS13004  
Color Shown: Black

## HEAVYWEIGHT

### 3-End Fleece

10 oz. (340 GSM)  
70% Cotton  
30% Recycled Polyester



**Heavyweight Pullover Hoodie**  
LS19001  
Color Shown: Navy





# URBAN COLLECTION

## STREETWEAR ELEVATED



A collection of premium 3-end fleece.

### Urban Pullover Hoodie

LS16001

Colors Shown: Lunar Rock, Pebble Blue, Oil Green, Burro

### Urban Sweatpants

LS16006

Colors Shown: Lunar Rock, Pebble Blue, Oil Green, Burro

*For brighter days ahead.*





COLOR SHOWN:  
BURRO

URBAN HEAVY TEE

**Fabrication**  
26 Doubles  
7.66 oz (260 GSM)  
100% Combed Cotton Jersey



PEANUT BUTTER



PEBBLE BLUE



LUNAR ROCK



PISTACHIO



SALMON



GRAPE ICE



BURRO



PIGMENT BLACK



OIL GREEN



PIGMENT WHITE

**Features**  
Heavy jersey. Pigment Dyed. Side-seamed. Double-needle top stitch on sleeve and bottom hem. Under 6% shrinkage. Tear away tags.



**Features**

Boxy fit, heavyweight and pigment dyed (except black and white). Double needle topstitch on all seams. 1x1 ribbing at cuff and waistband. 26 singles. 100% cotton face.



COLOR SHOWN:  
PEBBLE BLUE

**URBAN CREWNECK SWEATSHIRT**

**Fabrication**

3-End Fleece  
10 oz (340 GSM)  
80% Cotton, 20% Polyester





URBAN PULLOVER HOODIE

**Fabrication**  
3-End Fleece  
10 oz (340 GSM)  
80% Cotton, 20% Polyester



COLOR SHOWN:  
SALMON



BURRO



WHITE



GRAPE ICE



PEANUT BUTTER



PISTACHIO



COLOR SHOWN:  
BLACK



OIL GREEN



BLACK



PEBBLE BLUE



SALMON



LUNAR ROCK

Features

Boxy fit, 3-end fleece, heavyweight, pigment dyed and no drawcords. Two panel hood and double needle topstitch on all seams. 1x1 ribbing at cuff and waistband. All colors pigment dyed except black and white. Tear away tags.





WHITE



PISTACHIO



GRAPE ICE



SALMON



COLOR SHOWN:  
LUNAR ROCK



### Features

3-end fleece, heavyweight, and pigment dyed. Side pockets with extra internal YKK Zipper pockets for extra security. Elastic waistband and bottom cuff. Drawcords have metal tipping. SEAMLESS for perfect print real estate along the side of the leg. Pigment dyed (except for black and white). Tear away tags.



PEBBLE BLUE



LUNAR ROCK



BLACK



BURRO



OIL GREEN



PEANUT BUTTER

## URBAN SWEATPANTS

### Fabrication

3-End Fleece  
10 oz (340 GSM)  
80% Cotton, 20% Polyester



HEAVYWEIGHT  
COLLECTION

Heavyweight Pullover Hoodie  
LS19001  
Color Shown: Navy



Heavyweight Pullover Hoodie  
LS19001  
Color Shown: Meerkat







COLOR SHOWN:  
SAGE



COLONY BLUE



BUBBLE GUM PINK



SAGE



CHARCOAL HEATHER



LAVENDER



DUSTY BLUE



WHITE



SPORTS GREEN



HEATHER GREY



TOASTED COCONUT



COPPER



NAVY



SEAFOAM



NATURAL



BLACK



MUSHROOM

# HEAVYWEIGHT TEE

## Fabrication

20 Singles  
5.6 oz (190 GSM)

## Solids

100% Combed Cotton Jersey

## Heathers

60% Cotton, 40% Polyester

## Heather Grey

90% Cotton, 10% Polyester

## Features

Double-needle topstitch at sleeve and bottom hem, shoulders and armhole. Shoulder to shoulder tape. Tear away tag.



**Features**

Side-seamed. Double-needle stitch at sleeve and bottom hem and shoulders. Shoulder taping. Under 6% shrinkage. Tear away tags.



COLOR SHOWN:  
MUSHROOM

**HEAVYWEIGHT LONG SLEEVE TEE**

**Fabrication**

20 Singles  
5.6 oz (190 GSM)

**Solids**

100% Combed Cotton Jersey

**Heather Grey**

90% Cotton, 10% Polyester



CHESTNUT



PALE PINK



MUSHROOM



HEATHER GREY



MUSTARD



BURGUNDY



ARMY GREEN



COLONY BLUE



BLACK



WHITE



TEAL



PAPRIKA



NAVY



TOASTED COCONUT

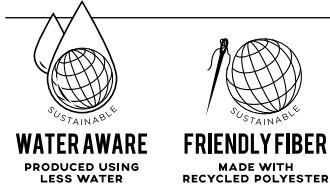




**Features**  
100% combed cotton face yarn. Double-needle stitch on all seams. Three panel hood with fleece lining for extra comfort. Double-needle topstitch on all seams. Dyed-to-match drawcords with knotted ends and metal eyelets. Kangaroo pocket. Ribbed cuffs and waistband. Tear away tags.



# HEAVYWEIGHT PULLOVER HOODIE



## Fabrication

3-End Fleece  
10 oz (340 GSM)

## Solids

70% Cotton, 10% Polyester, 20% Recycled Polyester

## Heather Grey

65% Cotton, 15% Polyester, 20% Recycled Polyester





# VINTAGE COLLECTION

**Vintage Raglan Hoodie**

LST004

Color Shown: Cloud Purple

**Vintage Joggers**

LST009

Color Shown: Cloud Purple

Mineral washed and laundered  
for superior hand-feel.



**Vintage Raglan Hoodie**

LST004

Color Shown: Vintage Camel, Cloud Purple

**Vintage Joggers**

LST009

Color Shown: Vintage Camel, Vintage Mustard, Cloud Purple

**Vintage Tee**

LST002

Color Shown: Vintage Black, Vintage Mustard







COLOR SHOWN:  
VINTAGE ZINC

# VINTAGE TEE

**Fabrication**  
30 Singles  
4.3 oz (145 GSM)  
100% Cotton Jersey



VINTAGE BLACK



VINTAGE CAMEL



VINTAGE DENIM



VINTAGE MUSTARD



VINTAGE OLIVE



VINTAGE ZINC



CLOUD BLACK



CLOUD PURPLE

**Features**  
Side Seamed. Tight-knit. Double-needle topstitched.  
Shoulder taping. Tear away tags.





COLOR SHOWN:  
VINTAGE DENIM

# VINTAGE RAGLAN HOODIE

**Fabrication**

3-End Fleece  
8.25 oz (280 GSM)  
100% Cotton



VINTAGE BLACK



VINTAGE DENIM



VINTAGE MUSTARD



VINTAGE OLIVE



VINTAGE ZINC



CLOUD BLACK



CLOUD PURPLE



VINTAGE WHITE



VINTAGE LAKE



VINTAGE CAMEL

**Features**

100% cotton face for prime printability. Double-needle stitched on all seams. Dyed-to-match drawcord. Ribbed sleeves and cuffs. Twill neck tape. 95% cotton, 5% spandex for better recovery. Tear away tags.



VINTAGE JOGGERS

Fabrication

3-End Fleece  
8.25 oz (280 GSM)  
100% Cotton



COLOR SHOWN:  
VINTAGE OLIVE



VINTAGE MUSTARD



VINTAGE ZINC



VINTAGE DENIM



VINTAGE BLACK



VINTAGE OLIVE



VINTAGE CAMEL



CLOUD BLACK



CLOUD PURPLE



COLOR SHOWN:  
VINTAGE ZINC

Features

100% combed ring spun cotton for prime printability. Side-seamed. Dyed-to-match drawcords. Back pocket and jersey-lined front pocket. Laundered for superior hand feel. Mineral washed. Tear away tags.



OUTERWEAR

Premium Crewneck Sweatshirt

LS14004  
Color Shown: Chestnut

Premium Pullover Hoodie

LS14001  
Color Shown: Sports Green, Seafoam



Premium Pullover Hoodie

LS14001  
Color Shown: Seafoam

Premium Fleece Joggers

LST006  
Color Shown: Seafoam

Premium Crewneck Sweatshirt

LS14004  
Color Shown: Chestnut







COLOR SHOWN:  
STORM



COLOR SHOWN:  
BLACK

**Features**

Raw hem, dyed-to-match flat drawcord, dropped shoulders. Double-needle topstitch on all seams. Tear away tags.



**WATERAWARE**  
PRODUCED USING  
LESS WATER



**FRIENDLYFIBER**  
MADE WITH  
RECYCLED POLYESTER

**CROP HOODIE**

**Fabrication**

3-End Fleece

7.05 oz (240 GSM)

85% Cotton, 15% Recycled Polyester



PALE PINK



STORM



LILAC



BLACK



MAUVE



WHITE



FRENCH TERRY

Fabrication

3-End French Terry  
7.4 oz (250 GSM)

Solids

80% Cotton, 10% Polyester, 10% Recycled Polyester

Heathers

60% Cotton, 30% Polyester, 10% Recycled Polyester



BLACK



ROYAL HEATHER



DENIM HEATHER



GRAPHITE HEATHER



NAVY



WHITE



MAUVE



CHARCOAL HEATHER



COLOR SHOWN:  
NAVY

Features

Double-needle topstitch on all seams. Half-moon patch on the back neck for easy relabelling. Ribbed cuffs. Twill neck tape. Under 6% shrinkage. 30 singles 100% cotton face yarn. Tear away tags.

FRENCH TERRY  
RAGLAN CREWNECK

FRENCH TERRY HOODIE



DENIM HEATHER



GRAPHITE HEATHER



NAVY



MAUVE



CHARCOAL HEATHER



WHITE



ROYAL HEATHER



BLACK

Features

Three panel hood with self-lining for extra comfort. Double-needle topstitch on all seams. Dyed-to-match drawcord with metal grommets. Half-moon patch on the back neck for easy relabelling. Twill neck tape. Under 6% shrinkage. Tear away tags.



COLOR SHOWN:  
DENIM HEATHER

LS13001



COLOR SHOWN:  
BLACK

PREMIUM PULLOVER HOODIE



**WATER AWARE**  
PRODUCED USING  
LESS WATER



**FRIENDLY FIBER**  
MADE WITH  
RECYCLED POLYESTER

**Fabrication**

3-End Fleece  
8.25 oz (280 GSM)

**Solids**

80% Cotton, 10% Polyester, 10% Recycled Polyester

**Heathers**

60% Cotton, 30% Polyester, 10% Recycled Polyester

**Heather Grey**

70% Cotton, 20% Polyester, 10% Recycled Polyester



ANTIQUE GOLD



CARROT



OCEAN BLUE



PURPLE



CARDINAL



LEMON



HEATHER GREY



WHITE



TRUE ROYAL



BLACK



Features

Three panel hood fleece lined for extra comfort. 100% cotton face. Side-seamed. Double-needle topstitch on all seams. Dyed-to-match drawcords with tipped ends and metal eyelets. Kangaroo pocket. Ribbed cuffs and waistband. Tear away tags.



MUSTARD



CHARCOAL HEATHER



PALE PINK



CHESTNUT



COLONY BLUE



RED



OATMEAL HEATHER



NAVY



LILAC



SPORTS GREEN



BURGUNDY



SEAFOAM



SANDSHELL



BLUE MIST



PINA COLADA



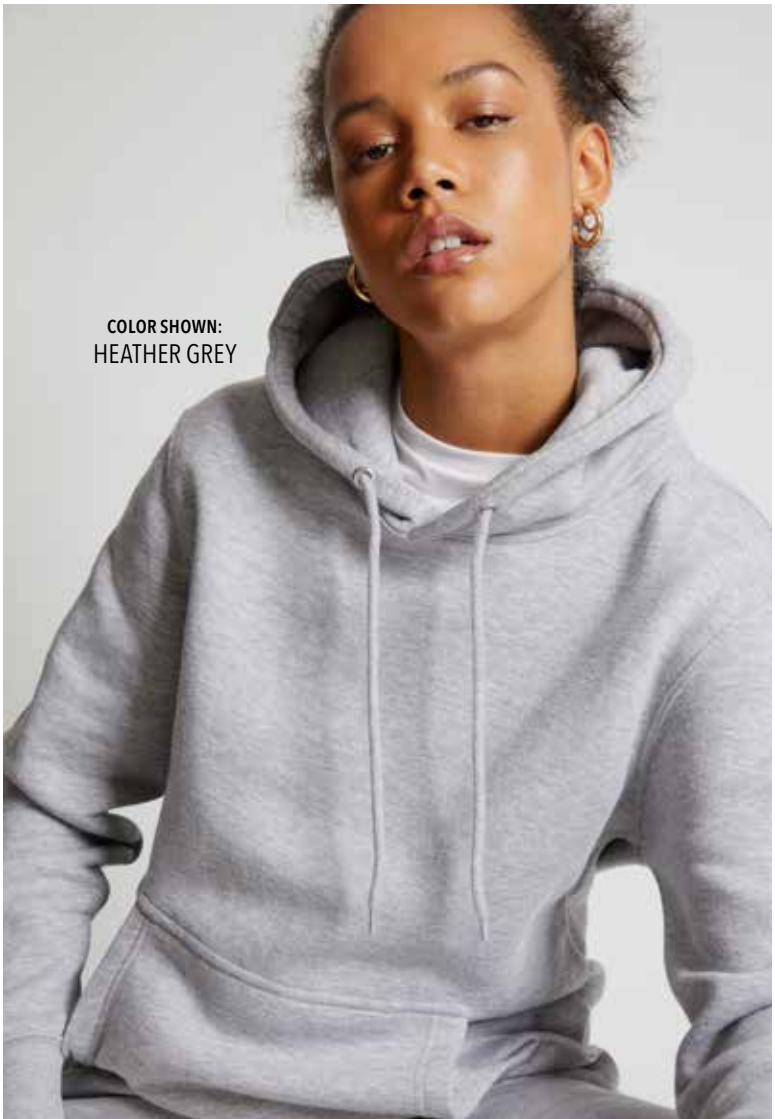
ARMY GREEN



SAGE CAMO



SLATE CAMO





COLOR SHOWN:  
NAVY

COLOR SHOWN:  
TRUE ROYAL

PREMIUM YOUTH PULLOVER HOODIE



PRODUCED USING  
LESS WATER



MADE WITH  
RECYCLED POLYESTER

Fabrication

3-End Fleece  
8.25 oz (280 GSM)

Solids

80% Cotton, 10% Polyester, 10% Recycled Polyester

Heathers

60% Cotton, 30% Polyester, 10% Recycled Polyester

Heather Grey

70% Cotton, 20% Polyester, 10% Recycled Polyester



BLACK



LILAC



WHITE



HEATHER GREY



CHARCOAL HEATHR



TRUE ROYAL



PINA COLADA

Features

Two panel hood. Side-seamed. Double-needle topstitch on all seams. No drawstrings. Kangaroo pocket. Ribbed cuffs and waistband. Tear away tags.



NAVY





COLOR SHOWN:  
NAVY

COLOR SHOWN:  
BURGUNDY

# PREMIUM FULL ZIP HOODIE



## Fabrication

3-End Fleece  
8.25 oz (280 GSM)

### Solids

80% Cotton, 10% Polyester, 10% Recycled Polyester

### Heathers

60% Cotton, 30% Polyester, 10% Recycled Polyester

### Heather Grey

70% Cotton, 20% Polyester, 10% Recycled Polyester



CHARCOAL HEATHER



BURGUNDY



NAVY



HEATHER GREY



WHITE



BLACK



TRUE ROYAL



RED



OATMEAL HEATHER

## Features

Side-seamed. YKK #5 zipper and DA8 auto-lock slider. Double-needle topstitch on all seams. Three panel hood with fleece lining for extra comfort. Matching round drawcord with tipped ends and metal eyelets. Kangaroo pockets. Ribbed cuff and sleeve. Twill neck tape. Tear away tags.



Features

100% cotton face. Double-needle topstitch on all seams. 1x1 ribbing at sleeve, cuff, and waistband. Twill neck tape. Tear away tags.



COLOR SHOWN:  
TRUE ROYAL

PREMIUM CREWNECK SWEATSHIRT



**WATER AWARE**  
PRODUCED USING  
LESS WATER



**FRIENDLY FIBER**  
MADE WITH  
RECYCLED POLYESTER

Fabrication

3-End Fleece  
8.25 oz (280 GSM)

Solids

80% Cotton, 10% Polyester, 10% Recycled Polyester

Heathers

60% Cotton, 30% Polyester, 10% Recycled Polyester

Heather Grey

70% Cotton, 20% Polyester, 10% Recycled Polyester



BLACK



SEAFOAM



NAVY



SPORTS GREEN



PALE PINK



CHESTNUT



OATMEAL HEATHER



CHARCOAL HEATHER



ANTIQUE GOLD



CARROT



SANDSHELL



HEATHER GREY



OCEAN BLUE



CARDINAL



WHITE



TRUE ROYAL



PURPLE



LEMON





COLOR SHOWN:  
NAVY

# FUTURE FLEECE HOODIE



**Fabrication**  
30 Singles  
7.96 oz (270 GSM)  
Regenerated Fleece  
55% Cotton, 45% Polyester



BLACK



HEATHER GREY



CHARCOAL HEATHER



NAVY

## Features

Two panel hood with fleece lining. Side-seamed. Double-needle topstitch on all seams. Dyed-to-match drawcords with tipped ends and metal eyelets. Tear away tags.





COLOR SHOWN:  
CHESTNUT



HEATHER GREY



SANDSHELL



CHESTNUT



CHARCOAL HEATHER



RED



SEAFOAM



ARMY GREEN



BURGUNDY



BLACK



WHITE

**Features**

Gusset insert for drop-crotch feel. Side-seamed. Ribbed bottom cuff and waistband, drawstring at waist. Two side pockets and back pocket. Tear away tags.

**PREMIUM FLEECE JOGGERS**



**Fabrication**

3-End Fleece  
8.25 oz (280 GSM)

**Solids**

80% Cotton, 10% Polyester, 10% Recycled Polyester

**Heathers**

60% Cotton, 30% Polyester, 10% Recycled Polyester

**Heather Grey**

70% Cotton, 20% Polyester, 10% Recycled Polyester



JERSEY  
COLLECTION

**Heavyweight Tee**  
LS15001  
Colors Shown: Charcoal Heather, Colony Blue



**Heavyweight Tee**  
LS15001  
Colors Shown: Charcoal Heather, Colony Blue





Features

Side-seamed. Double-needle stitch at sleeve and bottom hem, shoulders and armhole. Shoulder taping. Tear away tags.



COLOR SHOWN:  
PAPRIKA

DELUXE TEE

Fabrication

30 Singles  
4.3 oz (145 GSM)

Solids

100% Combed Cotton Jersey

Heather Grey

90% Cotton, 10% Polyester



BLACK

MUSHROOM

MEERKAT

PAPRIKA

MUSTARD

NAVY

BLUE MIST

CHESTNUT

LILAC

TEAL

RED

TRUE ROYAL

BURGUNDY

HEATHER GREY

WHITE

ARMY GREEN

PALE PINK



# DELUXE CVC TEE

## Fabrication

30 Singles

4.3 oz (145 GSM)

Ringspun CVC Blend

## Heathers

60% Cotton, 40% Polyester

## Black Heather

90% Cotton, 10% Polyester

## Oatmeal Heather

99% Cotton, 1% Polyester

## Features

Side-seamed. Double-needle stitch at sleeve and bottom hem. Shoulder taping. Tear away tags.



COLOR SHOWN:  
OLIVE HEATHER



BLACK HEATHER



OATMEAL HEATHER



NAVY HEATHER



BURGUNDY HEATHER



BROWN HEATHER



OLIVE HEATHER

COLOR REFERENCE

ANTIQUE GOLD	ARMY GREEN	BLACK	BLACK HEATHER	BLUE MIST
BROWN HEATHER	BUBBLE GUM PINK	BURGUNDY	BURGUNDY HEATHER	BURRO
CARDINAL	CARROT	CHARCOAL HEATHER	CHESTNUT	CLOUD BLACK
CLOUD PURPLE	COLONY BLUE	COPPER	DENIM HEATHER	DUSTY BLUE
GRAPE ICE	GRAPHITE HEATHER	HEATHER GREY	LAVENDER	LEMON
LILAC	LUNAR ROCK	MAUVE	MEERKAT	MUSHROOM
MUSTARD	NATURAL	NAVY	NAVY HEATHER	OATMEAL HEATHER

OCEAN BLUE	OIL GREEN	OLIVE HEATHER	PALE PINK	PAPRIKA
PEANUT BUTTER	PEBBLE BLUE	PIGMENT BLACK	PIGMENT WHITE	PINA COLADA
PISTACHIO	PURPLE	RED	ROYAL HEATHER	SAGE
SAGE CAMO	SALMON	SANDSHELL	SEAFOAM	SLATE CAMO
SPORTS GREEN	STORM	TEAL	TOASTED COCONUT	TRUE ROYAL
VINTAGE BLACK	VINTAGE CAMEL	VINTAGE DENIM	VINTAGE LAKE	VINTAGE MUSTARD
VINTAGE OLIVE	VINTAGE WHITE	VINTAGE ZINC	WHITE	



# CUSTOM MANUFACTURING

From development to delivery.



## DESIGN

Our goal is to help bring your concept from design to final product. We offer many customizations to help you do that, including:

- Sourcing Fabrications
- Printing & Embroidery
- Custom Colors
- Trims
- Labelling & Packaging

## LEAD TIMES

Our lead times are competitive and our team will work with you to meet your delivery needs. Our factories are vertically integrated, and you will have full visibility on production stages. Lead times can also depend on the product design and quantity.

We are here to bring your vision to life and maintain great efficiency to make sure you receive your products in a timely manner.



## MINIMUMS

Minimums are based on custom style and fabrication offered.

You have the flexibility to order as many quantities as you like. For more details Speak to a Lane Seven Rep for more details.



## PRICE

We have strong relationships with our factories, and as a result, we have an edge on quality, consistency, and can offer you the best prices in the market.



## SOCIAL RESPONSIBILITY

### Better Blanks In a Better Way

We have stricter than industry standard quality checks in place, all of our manufacturing is done in vertically integrated, ethically responsible and socially compliant factories, so you can rest easy knowing you are delivering only the best to your customer.



Lane Seven Apparel is committed to maintaining and upholding responsible workplace and environmental standards. We only work with partners who have our shared values of a humane and safe workplace and all of our factories are WRAP certified. WRAP certifications are awarded based on both internationally and nationally accepted humane workplace standards, local laws, and ethical manufacturing regulations.

### What is WRAP?

WRAP (Worldwide Responsible Accredited Production) is a globally recognized, independent 3rd party certifying body whose mission is to promote ethical, humane and lawful conditions and practices in all manufacturing facilities. Companies accepted into the WRAP organization go through an extensive application process in which manufacturing facilities, working environments, and worker's rights are inspected and approved by the WRAP association.

### What Principles Does the WRAP Certification Include?

- Human resources management
- Health and safety standards
- Environmental and eco-friendly practices
- Legal compliance including import/export, customs compliance and security standards







**CORPORATE OFFICE / SALES / WAREHOUSE**

5082 4th Street,  
Irwindale, CA. 91706

Tel: 562.584.5255

[www.lanesevenapparel.com](http://www.lanesevenapparel.com)  
@lane7apparel

ASI #: 66246  
PPAI #: 630869

**You can also find us at:**



L7

LANE SEVEN

SIZE SPECIFICATION SHEET

MEASUREMENTS ARE IN INCHES, BASED ON FLAT MEASUREMENTS

Style Number		XS	S	M	L	XL	2XL	3XL	4XL
<b>LS12000</b> CROP HOODIE	CHEST (1" below armhole)	20	22	24	26	X	X	X	X
	LENGTH (Measured from HPS)	17.5	18.5	19.5	20.5	X	X	X	X
<b>LS13001</b> FRENCH TERRY HOODIE	CHEST (1" below armhole)	19.75	20.75	21.75	22.75	23.75	24.75	25.75	X
	LENGTH (Measured from HPS)	25.5	26.5	27.5	28.5	29.5	30.5	31.5	X
<b>LS13004</b> FRENCH TERRY RAGLAN CREWNECK	CHEST (1" below armhole)	19.5	20.5	21.5	22.5	23.5	24.5	25.5	X
	LENGTH (Measured from HPS)	25.5	26.5	27.5	28.5	29.5	30.5	31.5	X
<b>LS14001</b> PREMIUM PULLOVER HOODIE	CHEST (1" below armhole)	18	20	22	24	26	28	30	32
	LENGTH (Measured from HPS)	26	27	28	29	30	31	32	33
<i>*4XL only available in select colors</i>									
<b>LS14001YH</b> PREMIUM YOUTH PULLOVER HOODIE	CHEST (1" below armhole)	14	16	18	20	22	X	X	X
	LENGTH (Measured from HPS)	20	21	23	25	27	X	X	X
<b>LS14003</b> PREMIUM FULL ZIP HOODIE	CHEST (1" below armhole)	18	20	22	24	26	28	30	X
	LENGTH (Measured from HPS)	26	27	28	29	30	31	32	X
<b>LS14004</b> PREMIUM CREWNECK SWEATSHIRT	CHEST (1" below armhole)	18	20	22	24	26	28	30	X
	LENGTH (Measured from HPS)	26	27	28	29	30	31	32	X
<b>LS15000</b> DELUXE TEE	CHEST (1" below armhole)	16	18	20	22	24	26	28	30
	LENGTH (Measured from HPS)	27	28	29	30	31	32	33	34
<i>*4XL only available in select colors</i>									
<b>LS15000CVC</b> DELUXE CVC TEE	CHEST (1" below armhole)	16	18	20	22	24	26	28	X
	LENGTH (Measured from HPS)	27	28	29	30	31	32	33	X
<b>LS15001</b> HEAVYWEIGHT TEE	CHEST (1" below armhole)	16.5	18.5	20.5	22.5	24.5	26.5	28.5	30.5
	LENGTH (Measured from HPS)	28	29	30	31	32	33	34.5	35.5
<i>*4XL only available in select colors</i>									
<b>LS15009</b> HEAVYWEIGHT LONG SLEEVE TEE	CHEST (1" below armhole)	17	18	20	22	24	26	28	X
	LENGTH (Measured from HPS)	27.5	28.5	29.5	30.5	31.5	32.5	33.5	X

Please note that the above sizing charts are subject to change.  
For more detailed information, please contact a Lane Seven Customer Service Representative.

L7

LANE SEVEN

SIZE SPECIFICATION SHEET

MEASUREMENTS ARE IN INCHES, BASED ON FLAT MEASUREMENTS

Style Number		XS	S	M	L	XL	2XL	3XL	4XL
<b>LS16001</b> URBAN PULLOVER HOODIE	CHEST (1" below armhole)	18	20	22	24	26	28	30	X
	LENGTH (Measured from HPS)	26	27	28	29	30	31	32	X
<b>LS16004</b> URBAN CREWNECK SWEATSHIRT	CHEST (1" below armhole)	18	20	22	24	26	28	30	X
	LENGTH (Measured from HPS)	26	27	28	29	30	31	32	X
<b>LS16005</b> URBAN HEAVY TEE	CHEST (1" below armhole)	18.5	20.5	22.5	24.5	26.5	28.5	30.5	X
	LENGTH (Measured from HPS)	25	26	27	28	29	30	31	X
<b>LS16006</b> URBAN SWEATPANTS	WAIST	28	30	32	34	36	38	40	X
	INSEAM	29	29	29	29	29	29	29	X
	OUTSEAM	40.5	41	41.5	42	42.5	43	43.5	X
<b>LS18002</b> FUTURE FLEECE HOODIE	CHEST (1" below armhole)	18	20	22	24	26	28	30	X
	LENGTH (Measured from HPS)	26	27	28	29	30	31	32	X
<b>LS19001</b> HEAVYWEIGHT PULLOVER HOODIE	CHEST (1" below armhole)	20.5	21	23	24.5	26.5	27.5	28.5	X
	LENGTH (Measured from HPS)	27.5	28.5	29.5	30.5	31.5	32.5	33.5	X
<b>LST002</b> VINTAGE TEE	CHEST (1" below armhole)	16	18	20	22	24	26	28	X
	LENGTH (Measured from HPS)	27	28	29	30	31	32	33	X
<b>LST004</b> VINTAGE RAGLAN HOODIE	CHEST (1" below armhole)	18	20	22	24	26	28	30	X
	LENGTH (Measured from HPS)	26	27	28	29	30	31	32	X
<b>LST006</b> PREMIUM FLEECE JOGGER	WAIST	28	30	32	34	36	38	40	X
	INSEAM	28	29	30	31	32	33	34	X
	OUTSEAM	38	39	40	41	42	43	44	X
<b>LST009</b> VINTAGE JOGGERS	WAIST	28	30	32	34	36	38	40	X
	INSEAM	28	29	30	31	32	33	34	X
	OUTSEAM	38	39	40	41	42	43	44	X

Please note that the above sizing charts are subject to change.  
For more detailed information, please contact a Lane Seven Customer Service Representative.



