

 LANE SEVEN





Table of Contents

04 OUR STORY

06 SUSTAINABILITY

08 NEW & TRENDING

10 NANTUCKET COLLECTION

16 HEAVY CORE COLLECTION

22 URBAN COLLECTION

32 HEAVYWEIGHT COLLECTION

40 VINTAGE COLLECTION

48 PREMIUM FLEECE COLLECTION

68 JERSEY COLLECTION

74 CUSTOM MANUFACTURING

76 SIZE CHARTS

HI, WE'RE LANE SEVEN

The apparel manufacturing brand built to Innovate.



A BETTER SWEATSHIRT.

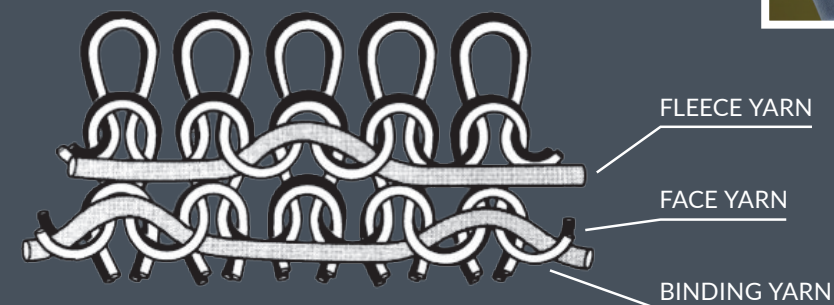
It starts with better materials, it continues with better design. We thought the fleece available to screenprinters was pretty average. There were many options, but they were all the same, same fabrics, same knitting, same printability.

So we decided to make them better...
WAY BETTER.



HOW DID WE DO IT?

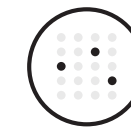
When we got here, the only fleece available to screenprinters was 2-end knitting...and it wasn't good enough. So, we started manufacturing fleece with a finer 3-end knit, which makes the garment surface easier to print.



The 3-end process can be more expensive partly due to the addition of a third yarn - **but it's so worth it.**



LOFTIER & SOFTER
HAND FEEL



MINIMAL
DYE MIGRATION



GUARANTEED UNDER
5% SHRINKAGE



TIGHT KNIT
100% COTTON FACE

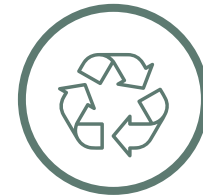


SUSTAINABILITY

We are committed to continuing to design sustainable products with more environmentally-friendly fibers and processes.



Since 2021, we've recycled **110 MILLION** plastic bottles in the knitting of our fleece.



80% of our fleece is produced in our plants powered by renewable energy.



SOCIAL RESPONSIBILITY

At Lane Seven, we are dedicated to continuously improving our practices to create products that uphold higher social and environmental standards while minimizing our overall impact. We have an obligation to future generations and are committed to doing our part by creating a product that is more responsible to the planet.

We have stricter than industry standard quality checks in place, and all our of manufacturing occurs in vertically integrated, ethically responsible, and socially compliant factories. We prioritize maintaining responsible workplace and environmental standards, partnering only with those who share our values of humane and safe working conditions. All our factories are WRAP certified.

Over the past few years, we've made significant strides and will continue to seek improvements. We have reduced excess waste, minimized water usage, and shifted most of our manufacturing to renewable energy sources. Additionally, we are committed to finding more sustainable and ethical alternatives for key materials. We also support the Better Cotton Initiative, the largest cotton sustainability program in the world.



Lane Seven is committed to improving cotton farming practices globally with the Better Cotton Initiative (BCI).

BY INTRODUCING
WATER-SAVING
TECHNIQUES IN THE
DYEING PROCESS DURING
THE PRODUCTION OF
LANE SEVEN FLEECE,
WE HAVE BEEN ABLE
TO ACHIEVE A SAVINGS
OF 352 MILLION LITERS
SINCE 2021.



NANTUCKET COLLECTION

LS11001 | Terra Brown, Black
LS11004 | Black, Ice Purple



Heavy Core Hoodie
LS17001
Colors Shown: Cream, Moss Grey



Heavy Core Tee
LS17005
Color Shown: Cream



Urban Pullover Hoodie
LS16001
Colors Shown: Midnight Navy, Forest Green, French Oak
Urban Heavyweight Tee
LS16005
Color Shown: Tornado

NEW & TRENDING

Looking ahead, comfort is not just a luxury; it's a priority. Streetwear trends will lean heavily into comfortable, yet stylish garments that don't compromise on aesthetics - striking a balance between ease and personality. Expect subtle, yet sophisticated details, and fashion forward cuts and rich, organic hues.

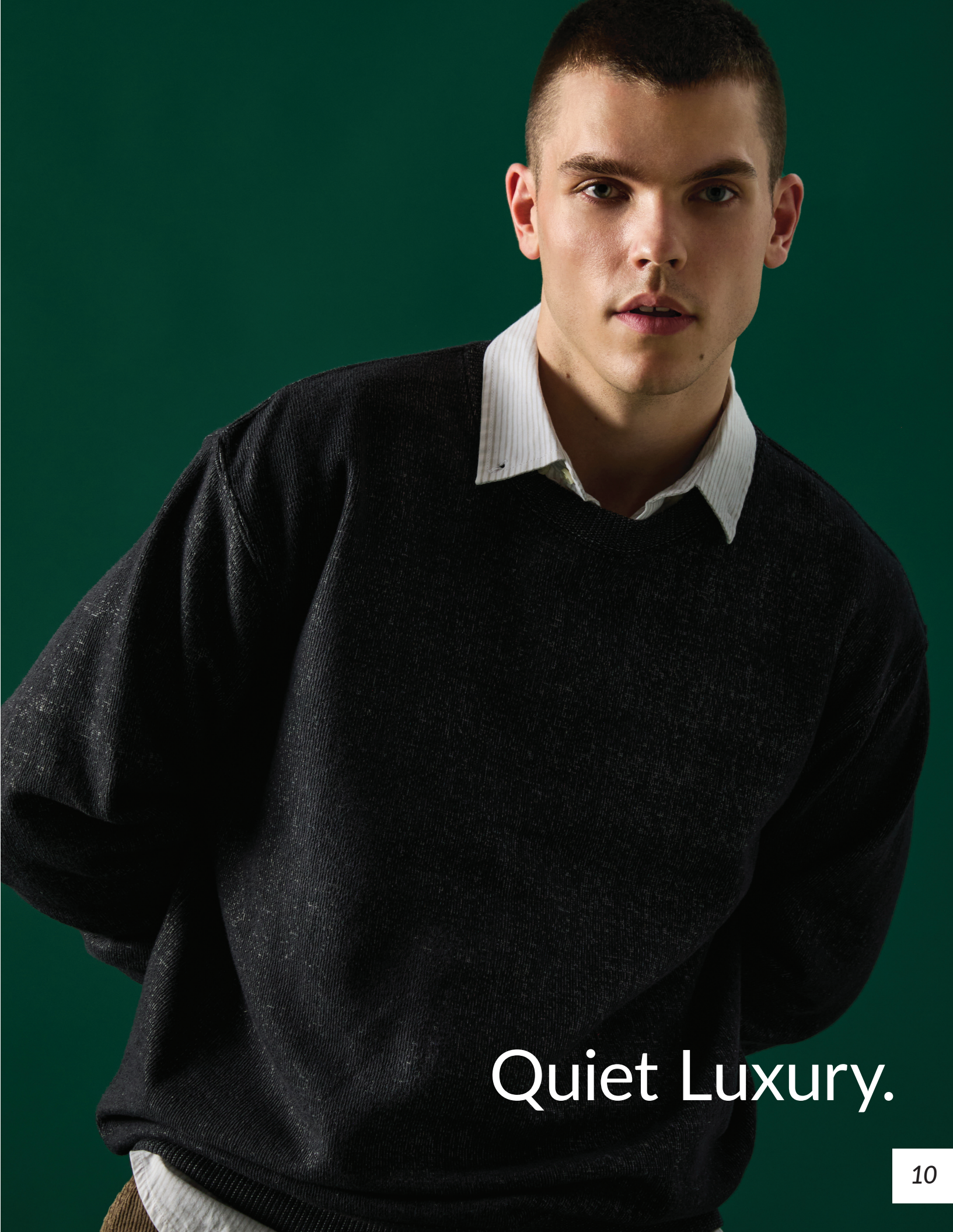
NANTUCKET
COLLECTION



Nantucket Crewneck Sweatshirt
LS11004
Colors Shown: Ice Purple, Latte

Nantucket Pullover Hoodie
LS11001
Colors Shown: Terra Brown, Navy

Nantucket Crewneck Sweatshirt
LS11004
Color Shown: Black



Quiet Luxury.

Features

Three panel hood fleece lined for extra comfort. Side-seamed. Double-needle topstitch on all seams. Kangaroo pocket. Ribbed cuffs and waistband. Dyed-to-match drawcords. Canvas neck tape. Tear away tags. Under 5% shrinkage.

COLORS SHOWN:
BLACK, SALT & PEPPER



NANTUCKET PULLOVER HOODIE



Fabrication
Nantucket Fleece
8.25 oz (280 GSM)
52% Cotton, 48% Polyester



NAVY*



SALT & PEPPER**



TERRA BROWN*



LATTE**



BLACK*



ICE PURPLE**

*150/48 white polyester yarn is used for texture with greige CVC yarn then cotton dyed to acquire the final color.
**150/48 dyed polyester yarn is used for texture with greige CVC yarn then bleaching the fabric to acquire the final color.

Features

Side-seamed. Double-needle topstitch on all seams. Ribbed cuffs and waistband. Canvas neck tape. Tear away tags. Under 5% shrinkage.



COLORS SHOWN:
NAVY, LATTE

NANTUCKET CREWNECK SWEATSHIRT



Fabrication
Nantucket Fleece
8.25 oz (280 GSM)
52% Cotton, 48% Polyester



NAVY*



SALT & PEPPER**



TERRA BROWN*



LATTE**



BLACK*



ICE PURPLE**

*150/48 white polyester yarn is used for texture with greige CVC yarn then cotton dyed to acquire the final color.
**150/48 dyed polyester yarn is used for texture with greige CVC yarn then bleaching the fabric to acquire the final color.

HEAVY CORE COLLECTION



Heavy Core Tee
LS17005
Color Shown: Chocolate Brown

Heavy Core Hoodie
LS17001
Color Shown: Black



Features

Heavyweight Jersey. Side-seamed. Double-needle top-stitch on sleeve and bottom hem. Single-needle top-stitch on shoulder, armhole and neck seam. Tear away tags. Under 6% shrinkage.



COLOR SHOWN:
CREAM

HEAVY CORE TEE

Fabrication

26 Doubles
8.2 oz (280 GSM)
100% Combed Cotton Jersey



ARONA



CREAM



CHOCOLATE BROWN



BLACK



ASPHALT



MOSS GREY

Features

Heavyweight 3-End French Terry. No drawcords. Double layered hood with single needle top stitch at neck seam. Raglan sleeves. 2x1 ribbing at cuff and waistband. Tear away tags. Under 5% shrinkage.



COLOR SHOWN:
CHOCOLATE BROWN

HEAVY CORE HOODIE



PRODUCED USING
LESS WATER



MADE WITH
RECYCLED POLYESTER

Fabrication

3-End French Terry
16.5 oz (560 GSM)

65% Cotton, 35% Recycled Polyester



ARONA



CREAM



CHOCOLATE BROWN



BLACK



ASPHALT



MOSS GREY

URBAN
COLLECTION

STREETWEAR ELEVATED

A collection of premium 3-end fleece.



Urban Pullover Hoodie

LS16001

Colors Shown: Sandshell, Midnight Navy, Peanut Butter, Heather Grey

Urban Crewneck Sweatshirt

LS16004

Color Shown: Salmon

Urban Sweatpants

LS16006

Color Shown: Salmon



For brighter days ahead.

Features

Heavy jersey. Side-seamed. Double-needle top stitch on sleeve and bottom hem. Pigment dyed. Tear away tags. Under 6% shrinkage.



COLOR SHOWN:
BURRO

URBAN HEAVY TEE

Fabrication

26 Doubles
7.66 oz (260 GSM)
100% Combed Cotton Jersey



FRENCH OAK



TORNADO



MIDNIGHT NAVY



PEANUT BUTTER



PEBBLE BLUE



SALMON



LUNAR ROCK



PISTACHIO



PIGMENT BLACK



GRAPE ICE



BURRO



OIL GREEN



PIGMENT WHITE

Features

Oversized fit. Heavyweight fleece. Double needle topstitch on all seams. 1x1 ribbing at cuff and waistband. All colors pigment dyed except black and white. Tear away tags. Under 5% shrinkage.



COLOR SHOWN:
GRAPE ICE

URBAN CREWNECK SWEATSHIRT



WATER AWARE
PRODUCED USING
LESS WATER



FRIENDLY FIBER
MADE WITH
RECYCLED POLYESTER

Fabrication

3-End Fleece

10 oz (340 GSM)

80% Cotton, 20% Recycled Polyester



GRAPE ICE



BURRO



PEANUT BUTTER



WHITE



OIL GREEN



SALMON



BLACK



PEBBLE BLUE



PISTACHIO



LUNAR ROCK



COLOR SHOWN:
SALMON

Features
Oversized fit. Heavyweight fleece. No drawcords. Two panel hood and double needle topstitch on all seams. 1x1 ribbing at cuff and waistband. Pigment dyed (except for black and white). Tear away tags. Under 5% shrinkage.



SANDSHELL



NAVY



HEATHER GREY



FOREST GREEN



PISTACHIO



GRAPE ICE



OIL GREEN



FRENCH OAK



BLACK



PEBBLE BLUE



SALMON



BURRO



TORNADO



MIDNIGHT NAVY



WHITE



PEANUT BUTTER



LUNAR ROCK

URBAN PULLOVER HOODIE



Fabrication
3-End Fleece
10 oz (340 GSM)

Solids
80% Cotton, 20% Recycled Polyester

Heather Grey
70% Cotton, 30% Recycled Polyester



WHITE



PISTACHIO



GRAPE ICE



SALMON



COLOR SHOWN:
BURRO



PEANUT BUTTER



BLACK



BURRO



OIL GREEN



LUNAR ROCK



PEBBLE BLUE

Features

Heavyweight fleece. Side pockets with extra internal YKK Zipper for security. Elastic waistband and bottom cuff. Drawcords have metal tipping. SEAMLESS for perfect print real estate along the side of the leg. Pigment dyed (except for black and white). Tear away tags. Under 5% shrinkage.

URBAN SWEATPANTS



WATER AWARE
PRODUCED USING
LESS WATER



FRIENDLY FIBER
MADE WITH
RECYCLED POLYESTER

Fabrication

3-End Fleece

10 oz (340 GSM)

80% Cotton, 20% Recycled Polyester



HEAVYWEIGHT COLLECTION



Heavyweight Pullover Hoodie
LS19001
Color Shown: Meerkat

Heavyweight Pullover Hoodie
LS19001
Color Shown: Lavender



Features

Double-needle topstitch at sleeve, bottom hem, shoulders and armhole. Shoulder to shoulder tape. Tear away tags. Under 6% shrinkage.



COLOR SHOWN:
SAGE

HEAVYWEIGHT TEE

Fabrication

20 Singles
5.6 oz (190 GSM)

Solids

100% Combed Cotton Jersey

Heathers

60% Cotton, 40% Polyester

Heather Grey

90% Cotton, 10% Polyester



SAGE



CHARCOAL HEATHER



TOASTED COCONUT



COLONY BLUE



WHITE



SPORTS GREEN



HEATHER GREY



BUBBLE GUM PINK



MUSHROOM



NAVY



SEAFOAM



NATURAL



BLACK



DUSTY BLUE



COPPER



LAVENDER

Features

Side-seamed. Double-needle topstitch at sleeves, bottom hem, and shoulders. Shoulder taping. Tear away tags. Under 6% shrinkage.



COLOR SHOWN:
MUSHROOM

HEAVYWEIGHT LONG SLEEVE TEE

Fabrication

20 Singles
5.6 oz (190 GSM)

Solids

100% Combed Cotton Jersey

Heather Grey

90% Cotton, 10% Polyester



MUSHROOM



HEATHER GREY



CHESTNUT



BURGUNDY



ARMY GREEN



COLONY BLUE



BLACK



WHITE



NAVY



TOASTED COCONUT

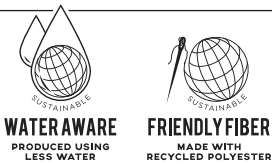


Features
100% combed cotton face yarn. Three panel hood with fleece lining for extra comfort. Double-needle topstitch on all seams. Dyed-to-match drawcords with knotted ends and metal eyelets. Kangaroo pocket. Ribbed cuffs and waistband. Tear away tags. Under 5% shrinkage.

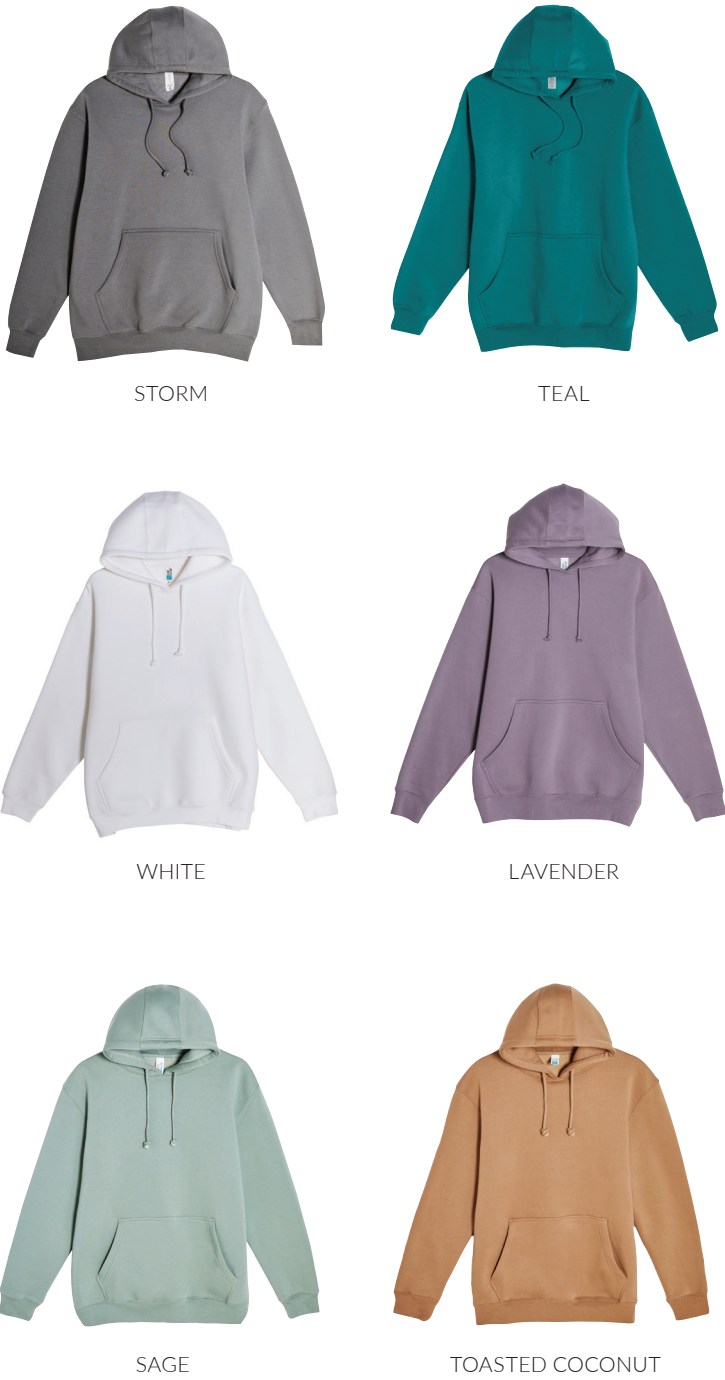


COLOR SHOWN:
TOASTED COCONUT

HEAVYWEIGHT PULLOVER HOODIE



Fabrication
3-End Fleece
10 oz (340 GSM)
Solids
70% Cotton, 30% Recycled Polyester
Heather Grey
65% Cotton, 35% Recycled Polyester



VINTAGE COLLECTION

Mineral washed and laundered for superior hand-feel.



Vintage Raglan Hoodie
LST004
Colors Shown: Vintage Camel, Cloud Purple

Vintage Joggers
LST009
Colors Shown: Vintage Camel, Vintage Mustard, Cloud Purple

Vintage Tee
LST002
Colors Shown: Vintage Black, Vintage Mustard

Vintage Raglan Hoodie
LST004
Color Shown: Cloud Black



Features

Side Seamed. Tight-knit. Double-needle topstitched. Shoulder taping. Mineral washed. Tear away tags. Under 6% shrinkage.



COLOR SHOWN:
VINTAGE ZINC

VINTAGE TEE

Fabrication

30 Singles
4.3 oz (145 GSM)
100% Cotton Jersey



VINTAGE BLACK



VINTAGE CAMEL



VINTAGE DENIM



VINTAGE MUSTARD



VINTAGE OLIVE



VINTAGE ZINC



CLOUD BLACK



CLOUD PURPLE

Features

100% cotton face for prime printability. Double-needle stitched on all seams. Dyed-to-match drawcord. Ribbed cuffs and waistband. Twill neck tape. 97% cotton, 3% polyester for better recovery. Mineral washed. Tear away tags. Under 5% shrinkage.



COLOR SHOWN:
VINTAGE OLIVE

VINTAGE RAGLAN HOODIE

Fabrication

8.25 oz (280 GSM)
100% Cotton Fleece



VINTAGE BLACK



VINTAGE MUSTARD



VINTAGE OLIVE



VINTAGE ZINC



CLOUD BLACK



CLOUD PURPLE



VINTAGE WHITE



VINTAGE DENIM



VINTAGE LAKE



VINTAGE CAMEL

Features

100% cotton face for prime printability. Side-seamed. Dyed-to-match drawcords. Back pocket and jersey-lined front pocket. Laundered for superior hand feel. Mineral washed. Tear away tags. Under 5% shrinkage.



COLOR SHOWN:
VINTAGE BLACK

VINTAGE JOGGERS

Fabrication
8.25 oz (280 GSM)
100% Cotton Fleece



VINTAGE BLACK



VINTAGE MUSTARD



VINTAGE ZINC



VINTAGE OLIVE



VINTAGE DENIM



VINTAGE CAMEL



CLOUD BLACK



CLOUD PURPLE

PREMIUM
FLEECE



Premium Crewneck Sweatshirt
LS14004
Colors Shown: Carrot, Lemon

Premium Pullover Hoodie
LS14001
Colors Shown: Purple, Ocean Blue

Premium Crewneck Sweatshirt
LS14004
Color Shown: Carrot



Features

Raw hem, dyed-to-match flat drawcord, dropped shoulders.
Double-needle topstitch on all seams. Tear away tags.
Under 5% shrinkage.



COLOR SHOWN:
MAUVE

CROP HOODIE



PRODUCED USING
LESS WATER



MADE WITH
RECYCLED POLYESTER

Fabrication

3-End Fleece

7.05 oz (240 GSM)

85% Cotton, 15% Recycled Polyester



PALE PINK



STORM



LILAC



BLACK



MAUVE



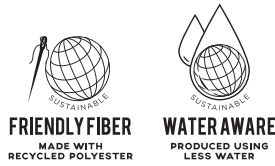
WHITE



COLOR SHOWN:
BLACK

FRENCH TERRY

Fabrication
3-End French Terry
7.4 oz (250 GSM)



Solids
80% Cotton, 20% Recycled Polyester

Heathers
60% Cotton, 40% Recycled Polyester

Features
Double-needle topstitch on all seams. Half-moon patch on the back neck for easy relabelling. Ribbed cuffs and waistband. Twill neck tape. 100% cotton face yarn. Tear away tags. Under 5% shrinkage.



FRENCH TERRY RAGLAN CREWNECK

FRENCH TERRY HOODIE



Features
Three panel hood with self-lining for extra comfort. Double-needle topstitch on all seams. Dyed-to-match drawcord with metal grommets. Half-moon patch on the back neck for easy relabelling. Twill neck tape. Tear away tags. Under 5% shrinkage.



COLOR SHOWN:
RED

PREMIUM PULLOVER HOODIE



WATER AWARE
PRODUCED USING
LESS WATER



FRIENDLY FIBER
MADE WITH
RECYCLED POLYESTER

Fabrication
3-End Fleece
8.25 oz (280 GSM)

Solids
80% Cotton, 20% Recycled Polyester

Heathers
60% Cotton, 40% Recycled Polyester

Heather Grey
70% Cotton, 30% Recycled Polyester



OCEAN BLUE



PURPLE



CARDINAL



LEMON



CARROT



ANTIQUE GOLD



HEATHER GREY



BLACK



WHITE



TRUE ROYAL



PALE PINK

Features

Three panel hood fleece lined for extra comfort. 100% cotton face. Side-seamed. Double-needle topstitch on all seams. Dyed-to-match drawcords with tipped ends and metal eyelets. Kangaroo pocket. Ribbed cuffs and waistband. Tear away tags. Under 5% shrinkage.





PREMIUM YOUTH PULLOVER HOODIE



WATER AWARE
PRODUCED USING
LESS WATER



FRIENDLY FIBER
MADE WITH
RECYCLED POLYESTER

Fabrication
3-End Fleece
8.25 oz (280 GSM)

Solids
80% Cotton, 20% Recycled Polyester

Heathers
60% Cotton, 40% Recycled Polyester

Heather Grey
70% Cotton, 30% Recycled Polyester



BLACK



LILAC



WHITE



HEATHER GREY



CHARCOAL HEATHER



TRUE ROYAL



PINA COLADA

Features

Two panel hood. Side-seamed. Double-needle topstitch on all seams. No drawstrings. Kangaroo pocket. Ribbed cuffs and waistband. Tear away tags. Under 5% shrinkage.



NAVY

Features



PREMIUM FULL ZIP HOODIE



WATER AWARE
PRODUCED USING
LESS WATER



FRIENDLY FIBER
MADE WITH
RECYCLED POLYESTER

Fabrication

3-End Fleece

8.25 oz (280 GSM)

Solids

80% Cotton, 20% Recycled Polyester

Heathers

60% Cotton, 40% Recycled Polyester

Heather Grey

70% Cotton, 30% Recycled Polyester



CHESTNUT



SANDSHELL



SEAFOAM



SPORTS GREEN



HEATHER GREY



WHITE



BLACK



TRUE ROYAL



BURGUNDY



CHARCOAL HEATHER



RED



OATMEAL HEATHER



NAVY

Features

100% cotton face. Double-needle topstitch on all seams. 1x1 ribbing at cuff and waistband. Twill neck tape. Tear away tags. Under 5% shrinkage.



COLOR SHOWN:
LEMON

PREMIUM CREWNECK SWEATSHIRT



PRODUCED USING
LESS WATER



MADE WITH
RECYCLED POLYESTER

Fabrication

3-End Fleece

8.25 oz (280 GSM)

Solids

80% Cotton, 20% Recycled Polyester

Heathers

60% Cotton, 40% Recycled Polyester

Heather Grey

70% Cotton, 30% Recycled Polyester



BLACK



SEAFOAM



NAVY



SPORTS GREEN



PALE PINK



CHESTNUT



OATMEAL HEATHER



CHARCOAL HEATHER



ANTIQUE GOLD



CARROT



SANDSHELL



HEATHER GREY



OCEAN BLUE



CARDINAL



WHITE



TRUE ROYAL



PURPLE



LEMON

Features

Two panel hood with fleece lining. Side-seamed. Double-needle topstitch on all seams. Dyed-to-match drawcords with tipped ends and metal eyelets. Tear away tags. Under 5% shrinkage.

COLOR SHOWN:
CHARCOAL HEATHER



FUTURE FLEECE HOODIE



Fabrication
3-End Fleece
7.96 oz (270 GSM)
Regenerated Fleece
55% Cotton, 45% Polyester



BLACK



HEATHER GREY



CHARCOAL HEATHER



NAVY



COLOR SHOWN:
CHESTNUT



HEATHER GREY



NAVY



CHESTNUT



CHARCOAL HEATHER



RED



SEAFOAM



ARMY GREEN



BURGUNDY



BLACK



WHITE



SANDSHELL

PREMIUM FLEECE JOGGERS



WATER AWARE
PRODUCED USING
LESS WATER



FRIENDLY FIBER
MADE WITH
RECYCLED POLYESTER

Fabrication

3-End Fleece

8.25 oz (280 GSM)

Solids

80% Cotton, 20% Recycled Polyester

Heathers

60% Cotton, 40% Recycled Polyester

Heather Grey

70% Cotton, 30% Recycled Polyester

Features

Gusset insert for drop-crotch feel. Side-seamed. Ribbed bottom cuffs and waistband, drawstring at waist. Two side pockets and back pocket. Tear away tags. Under 5% shrinkage.

JERSEY
COLLECTION



Deluxe CVC Tee
LS15000CVC
Color Shown: Black Heather

Deluxe Tee
LS15000
Color Shown: Heather Grey



Features

Side-seamed. Double-needle topstitch at sleeve, bottom hem, shoulders and armhole. Shoulder taping. Tear away tags. Under 6% shrinkage.



COLOR SHOWN:
RED

DELUXE TEE

Fabrication

30 Singles
4.3 oz (145 GSM)

Solids

100% Combed Cotton Jersey

Heather Grey

90% Cotton, 10% Polyester



WHITE



ARMY GREEN



BLACK



MUSHROOM



MUSTARD



NAVY



BLUE MIST



CHESTNUT



LILAC



PALE PINK



RED



TRUE ROYAL



BURGUNDY



HEATHER GREY

Features

Side-seamed. Double-needle stitch at sleeve and bottom hem. Shoulder taping. Tear away tags. Under 6% shrinkage.



COLOR SHOWN:
OLIVE HEATHER

DELUXE CVC TEE

Fabrication

30 Singles
4.3 oz (145 GSM)
Ringspun CVC Blend

Heathers

60% Cotton, 40% Polyester

Black Heather

90% Cotton, 10% Polyester

Oatmeal Heather

99% Cotton, 1% Polyester



BLACK HEATHER



OATMEAL HEATHER



NAVY HEATHER



BURGUNDY HEATHER



BROWN HEATHER



OLIVE HEATHER

CUSTOM MANUFACTURING

From development to delivery.

DESIGN

Our goal is to help bring your concept from design to final product. We offer many customizations to help you do that, including:

- Sourcing Fabrications
- Printing & Embroidery
- Custom Colors
- Trims
- Labelling & Packaging

LEAD TIMES

Our lead times are competitive and our team will work with you to meet your delivery needs. Our factories are vertically integrated, and you will have full visibility on production stages. Lead times can also depend on the product design and quantity.

We are here to bring your vision to life and maintain great efficiency to make sure you receive your products in a timely manner.

MINIMUMS

Minimums are based on custom style and fabrication offered.

You have the flexibility to order as many quantities as you want. Speak to a Lane Seven sales representative for more details.



PRICE

We have strong relationships with our factories, and as a result, we have an edge on quality, consistency, and can offer you the best prices in the market.

MEASUREMENTS ARE IN INCHES • BASED ON FLAT MEASUREMENTS

Style Number		XS	S	M	L	XL	2XL	3XL	4XL
LS11001 NANTUCKET PULLOVER HOODIE	CHEST	18	20	22	24	26	28	30	X
	LENGTH <small>(Measured from HPS)</small>	26	27	28	29	30	31	32	X
LS11004 NANTUCKET CREWNECK SWEATSHIRT	CHEST <small>(1" below armhole)</small>	18	20	22	24	26	28	30	X
	LENGTH <small>(Measured from HPS)</small>	26	27	28	29	30	31	32	X
LS12000 CROP HOODIE	CHEST <small>(1" below armhole)</small>	20	22	24	26	X	X	X	X
	LENGTH <small>(Measured from HPS)</small>	17.5	18.5	19.5	20.5	X	X	X	X
LS13001 FRENCH TERRY HOODIE	CHEST <small>(1" below armhole)</small>	19.75	20.75	21.75	22.75	23.75	24.75	25.75	X
	LENGTH <small>(Measured from HPS)</small>	25.5	26.5	27.5	28.5	29.5	30.5	31.5	X
LS13004 FRENCH TERRY RAGLAN CREWNECK	CHEST <small>(1" below armhole)</small>	19.5	20.5	21.5	22.5	23.5	24.5	25.5	X
	LENGTH <small>(Measured from HPS)</small>	25.5	26.5	27.5	28.5	29.5	30.5	31.5	X
LS14001 PREMIUM PULLOVER HOODIE	CHEST <small>(1" below armhole)</small>	18	20	22	24	26	28	30	32
	LENGTH <small>(Measured from HPS)</small>	26	27	28	29	30	31	32	33
		<i>*4XL only available in select colors</i>							
LS14001YH PREMIUM YOUTH PULLOVER HOODIE	CHEST <small>(1" below armhole)</small>	14	16	18	20	22	X	X	X
	LENGTH <small>(Measured from HPS)</small>	20	21	23	25	27	X	X	X
LS14003 PREMIUM FULL ZIP HOODIE	CHEST <small>(1" below armhole)</small>	18	20	22	24	26	28	30	X
	LENGTH <small>(Measured from HPS)</small>	26	27	28	29	30	31	32	X
LS14004 PREMIUM CREWNECK SWEATSHIRT	CHEST <small>(1" below armhole)</small>	18	20	22	24	26	28	30	X
	LENGTH <small>(Measured from HPS)</small>	26	27	28	29	30	31	32	X
LS15000 DELUXE TEE	CHEST <small>(1" below armhole)</small>	16	18	20	22	24	26	28	30
	LENGTH <small>(Measured from HPS)</small>	27	28	29	30	31	32	33	34
		<i>*4XL only available in select colors</i>							
LS15000CVC DELUXE CVC TEE	CHEST <small>(1" below armhole)</small>	16	18	20	22	24	26	28	X
	LENGTH <small>(Measured from HPS)</small>	27	28	29	30	31	32	33	X
LS15001 HEAVYWEIGHT TEE	CHEST <small>(1" below armhole)</small>	16.5	18.5	20.5	22.5	24.5	26.5	28.5	30.5
	LENGTH <small>(Measured from HPS)</small>	28	29	30	31	32	33	34.5	35.5
		<i>*4XL only available in select colors</i>							

Please note that the above sizing charts are subject to change.
For more detailed information, please contact a Lane Seven Customer Service Representative.

MEASUREMENTS ARE IN INCHES • BASED ON FLAT MEASUREMENTS

Style Number		XS	S	M	L	XL	2XL	3XL	4XL
LS15009 HEAVYWEIGHT LONG SLEEVE TEE	CHEST	17	18	20	22	24	26	28	X
	LENGTH <small>(Measured from HPS)</small>	27.5	28.5	29.5	30.5	31.5	32.5	33.5	X
LS16001 URBAN PULLOVER HOODIE	CHEST <small>(1" below armhole)</small>	18	20	22	24	26	28	30	X
	LENGTH <small>(Measured from HPS)</small>	26	27	28	29	30	31	32	X
LS16004 URBAN CREWNECK SWEATSHIRT	CHEST <small>(1" below armhole)</small>	18	20	22	24	26	28	30	X
	LENGTH <small>(Measured from HPS)</small>	26	27	28	29	30	31	32	X
LS16005 URBAN HEAVY TEE	CHEST <small>(1" below armhole)</small>	18.5	20.5	22.5	24.5	26.5	28.5	30.5	X
	LENGTH <small>(Measured from HPS)</small>	25	26	27	28	29	30	31	X
LS16006 URBAN SWEATPANTS	WAIST	28	30	32	34	36	38	40	X
	INSEAM	29	29	29	29	29	29	29	X
	OUTSEAM	40.5	41	41.5	42	42.5	43	43.5	X
LS17001 HEAVY CORE HOODIE	CHEST <small>(1" below armhole)</small>	18	20	22	24	26	28	30	X
	LENGTH <small>(Measured from HPS)</small>	26	27	28	29	30	31	32	X
LS17005 HEAVY CORE TEE	CHEST <small>(1" below armhole)</small>	18.5	20.5	22.5	24.5	26.5	28.5	30.5	X
	LENGTH <small>(Measured from HPS)</small>	27	28	29	30	31	32	33	X
LS18002 FUTURE FLEECE HOODIE	CHEST <small>(1" below armhole)</small>	18	20	22	24	26	28	30	X
	LENGTH <small>(Measured from HPS)</small>	26	27	28	29	30	31	32	X
LS19001 HEAVYWEIGHT PULLOVER HOODIE	CHEST <small>(1" below armhole)</small>	20.5	21	23	24.5	26.5	27.5	28.5	X
	LENGTH <small>(Measured from HPS)</small>	27.5	28.5	29.5	30.5	31.5	32.5	33.5	X
LST002 VINTAGE TEE	CHEST <small>(1" below armhole)</small>	16	18	20	22	24	26	28	X
	LENGTH <small>(Measured from HPS)</small>	27	28	29	30	31	32	33	X
LST004 VINTAGE RAGLAN HOODIE	CHEST <small>(1" below armhole)</small>	18	20	22	24	26	28	30	X
	LENGTH <small>(Measured from HPS)</small>	26	27	28	29	30	31	32	X
LST006 PREMIUM FLEECE JOGGER	WAIST	28	30	32	34	36	38	40	X
	INSEAM	28	29	30	31	32	33	34	X
	OUTSEAM	38	39	40	41	42	43	44	X
LST009 VINTAGE JOGGERS	WAIST	28	30	32	34	36	38	40	X
	INSEAM	28	29	30	31	32	33	34	X
	OUTSEAM	38	39	40	41	42	43	44	X

Please note that the above sizing charts are subject to change.
For more detailed information, please contact a Lane Seven Customer Service Representative.



CORPORATE OFFICE / SALES / WAREHOUSE

LOS ANGELES, CA

5082 4th Street
Irwindale, California 91706

GASTONIA, NC

3145 Aberdeen Blvd, Ste 400
Gastonia, North Carolina 28054

www.lanesevenapparel.com
@lane7apparel

ASI #: 66246
PPAI #: 630869

You can also find us at:



UNITEDBLANKS

NOTES

 LANE SEVEN

