

 LANE SEVEN





# *Table of Contents*

04 OUR STORY

06 SUSTAINABILITY

08 NEW & TRENDING

10 NANTUCKET COLLECTION

16 HEAVY CORE COLLECTION

22 URBAN COLLECTION

32 HEAVYWEIGHT COLLECTION

40 VINTAGE COLLECTION

48 PREMIUM FLEECE COLLECTION

68 JERSEY COLLECTION

74 CUSTOM MANUFACTURING

76 SIZE CHARTS



# HI, WE'RE LANE SEVEN

## The apparel manufacturing brand built to Innovate.



### A BETTER SWEATSHIRT.

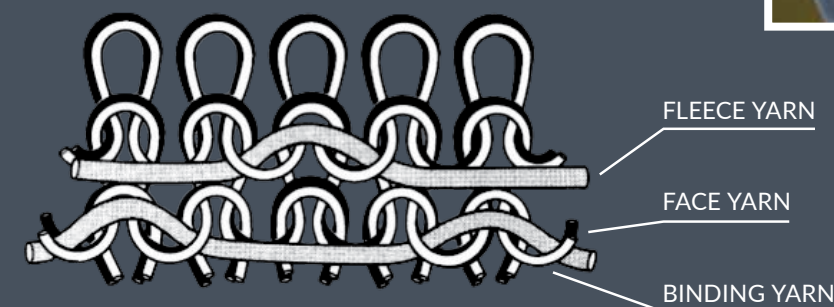
It starts with better materials, it continues with better design. We thought the fleece available to screenprinters was pretty average. There were many options, but they were all the same, same fabrics, same knitting, same printability.

So we decided to make them better...  
**WAY BETTER.**



### HOW DID WE DO IT?

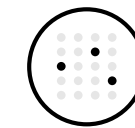
When we got here, the only fleece available to screenprinters was 2-end knitting...and it wasn't good enough. So, we started manufacturing fleece with a finer 3-end knit, which makes the garment surface easier to print.



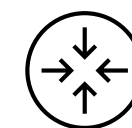
The 3-end process can be more expensive partly due to the addition of a third yarn - **but it's so worth it.**



LOFTIER & SOFTER  
HAND FEEL



MINIMAL  
DYE MIGRATION



GUARANTEED UNDER  
5% SHRINKAGE



TIGHT KNIT  
100% COTTON FACE





## SUSTAINABILITY

We are committed to continuing to design sustainable products with more environmentally-friendly fibers and processes.



Since 2021, we've recycled **110 MILLION** plastic bottles in the knitting of our fleece.



**80%** of our fleece is produced in our plants powered by renewable energy.



## SOCIAL RESPONSIBILITY

At Lane Seven, we are dedicated to continuously improving our practices to create products that uphold higher social and environmental standards while minimizing our overall impact. We have an obligation to future generations and are committed to doing our part by creating a product that is more responsible to the planet.

We have stricter than industry standard quality checks in place, and all our of manufacturing occurs in vertically integrated, ethically responsible, and socially compliant factories. We prioritize maintaining responsible workplace and environmental standards, partnering only with those who share our values of humane and safe working conditions. All our factories are WRAP certified.

Over the past few years, we've made significant strides and will continue to seek improvements. We have reduced excess waste, minimized water usage, and shifted most of our manufacturing to renewable energy sources. Additionally, we are committed to finding more sustainable and ethical alternatives for key materials. We also support the Better Cotton Initiative, the largest cotton sustainability program in the world.



Lane Seven is committed to improving cotton farming practices globally with the Better Cotton Initiative (BCI).

BY INTRODUCING  
WATER-SAVING  
TECHNIQUES IN THE  
DYEING PROCESS DURING  
THE PRODUCTION OF  
LANE SEVEN FLEECE,  
WE HAVE BEEN ABLE  
TO ACHIEVE A SAVINGS  
OF 352 MILLION LITERS  
SINCE 2021.





NANTUCKET COLLECTION

LS11001 | Terra Brown, Black  
LS11004 | Black, Ice Purple



Heavy Core Hoodie  
LS17001  
Colors Shown: Cream, Moss Grey



Heavy Core Tee  
LS17005  
Color Shown: Cream



Urban Pullover Hoodie  
LS16001  
Colors Shown: Midnight Navy, Forest Green, French Oak  
Urban Heavyweight Tee  
LS16005  
Color Shown: Tornado

NEW & TRENDING

Looking ahead, comfort is not just a luxury; it's a priority. Streetwear trends will lean heavily into comfortable, yet stylish garments that don't compromise on aesthetics - striking a balance between ease and personality. Expect subtle, yet sophisticated details, and fashion forward cuts and rich, organic hues.



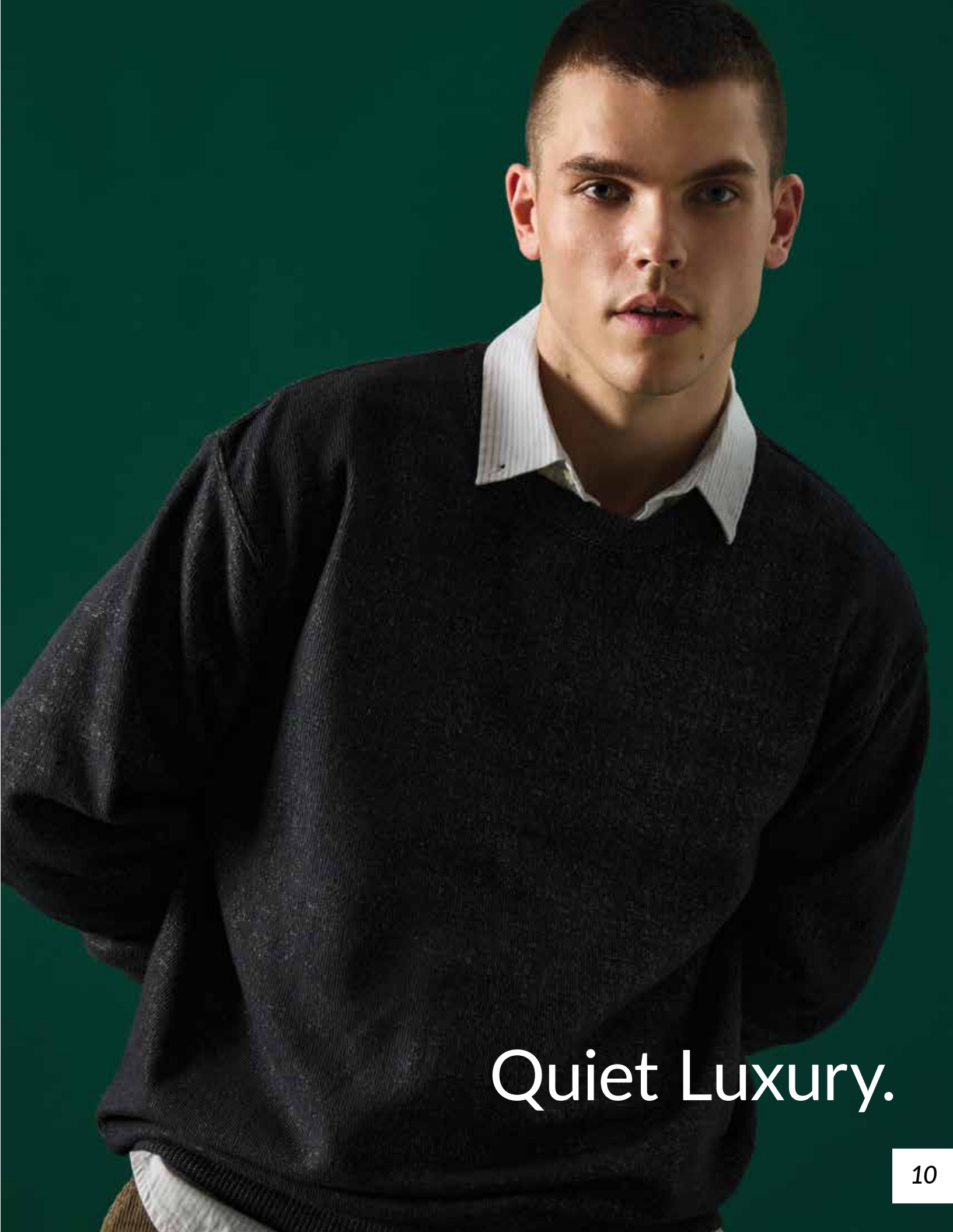
NANTUCKET  
COLLECTION



**Nantucket Crewneck Sweatshirt**  
LS11004  
Colors Shown: Ice Purple, Latte

**Nantucket Pullover Hoodie**  
LS11001  
Colors Shown: Terra Brown, Navy

**Nantucket Crewneck Sweatshirt**  
LS11004  
Color Shown: Black



Quiet Luxury.



Features

Three panel hood fleece lined for extra comfort. Side-seamed. Double-needle topstitch on all seams. Kangaroo pocket. Ribbed cuffs and waistband. Dyed-to-match drawcords. Canvas neck tape. Tear away tags. Under 5% shrinkage.

COLORS SHOWN:  
BLACK, SALT & PEPPER



NANTUCKET PULLOVER HOODIE



Fabrication  
Nantucket Fleece  
8.25 oz (280 GSM)  
52% Cotton, 48% Polyester



NAVY\*



SALT & PEPPER\*\*



TERRA BROWN\*



LATTE\*\*



BLACK\*



ICE PURPLE\*\*

\*150/48 white polyester yarn is used for texture with greige CVC yarn then cotton dyed to acquire the final color.  
\*\*150/48 dyed polyester yarn is used for texture with greige CVC yarn then bleaching the fabric to acquire the final color.

Features

Side-seamed. Double-needle topstitch on all seams. Ribbed cuffs and waistband. Canvas neck tape. Tear away tags. Under 5% shrinkage.



COLORS SHOWN:  
NAVY, LATTE

NANTUCKET CREWNECK SWEATSHIRT



Fabrication  
Nantucket Fleece  
8.25 oz (280 GSM)  
52% Cotton, 48% Polyester



NAVY\*



SALT & PEPPER\*\*



TERRA BROWN\*



LATTE\*\*



BLACK\*



ICE PURPLE\*\*

\*150/48 white polyester yarn is used for texture with greige CVC yarn then cotton dyed to acquire the final color.  
\*\*150/48 dyed polyester yarn is used for texture with greige CVC yarn then bleaching the fabric to acquire the final color.



HEAVY CORE  
COLLECTION



**Heavy Core Tee**  
LS17005  
Color Shown: Chocolate Brown



**Heavy Core Hoodie**  
LS17001  
Color Shown: Black

Features

Heavyweight Jersey. Side-seamed. Double-needle top-stitch on sleeve and bottom hem. Single-needle top-stitch on shoulder, armhole and neck seam. Tear away tags. Under 6% shrinkage.



COLOR SHOWN:  
CREAM

HEAVY CORE TEE

Fabrication

26 Doubles  
8.2 oz (280 GSM)  
100% Combed Cotton Jersey



ARONA



CREAM



CHOCOLATE BROWN



BLACK



ASPHALT



MOSS GREY



Features

Heavyweight 3-End French Terry. No drawcords. Double layered hood with single needle top stitch at neck seam. Raglan sleeves. 2x1 ribbing at cuff and waistband. Tear away tags. Under 5% shrinkage.



COLOR SHOWN:  
CHOCOLATE BROWN

HEAVY CORE HOODIE



WATER AWARE  
PRODUCED USING  
LESS WATER



FRIENDLY FIBER  
MADE WITH  
RECYCLED POLYESTER

Fabrication

3-End French Terry  
16.5 oz (560 GSM)

65% Cotton, 35% Recycled Polyester



ARONA



CREAM



CHOCOLATE BROWN



BLACK



ASPHALT



MOSS GREY

URBAN  
COLLECTION

***STREETWEAR ELEVATED***

A collection of premium 3-end fleece.



**Urban Pullover Hoodie**

LS16001

Colors Shown: Sandshell, Midnight Navy, Peanut Butter, Heather Grey

**Urban Crewneck Sweatshirt**

LS16004

Color Shown: Salmon

**Urban Sweatpants**

LS16006

Color Shown: Salmon



*For brighter days ahead.*



Features

Heavy jersey. Side-seamed. Double-needle top stitch on sleeve and bottom hem. Pigment dyed. Tear away tags. Under 6% shrinkage.



COLOR SHOWN:  
BURRO

URBAN HEAVY TEE

Fabrication

26 Doubles  
7.66 oz (260 GSM)  
100% Combed Cotton Jersey



FRENCH OAK



TORNADO



MIDNIGHT NAVY



PEANUT BUTTER



PEBBLE BLUE



SALMON



LUNAR ROCK



PISTACHIO



PIGMENT BLACK



GRAPE ICE



BURRO



OIL GREEN



PIGMENT WHITE

Features

Oversized fit. Heavyweight fleece. Double needle topstitch on all seams. 1x1 ribbing at cuff and waistband. All colors pigment dyed except black and white. Tear away tags. Under 5% shrinkage.



COLOR SHOWN:  
GRAPE ICE

URBAN CREWNECK SWEATSHIRT



Fabrication

3-End Fleece

10 oz (340 GSM)

80% Cotton, 20% Recycled Polyester



GRAPE ICE



BURRO



PEANUT BUTTER



WHITE



OIL GREEN



SALMON



BLACK



PEBBLE BLUE



PISTACHIO



LUNAR ROCK





COLOR SHOWN:  
SALMON

**Features**  
Oversized fit. Heavyweight fleece. No drawcords. Two panel hood and double needle topstitch on all seams. 1x1 ribbing at cuff and waistband. Pigment dyed (except for black and white). Tear away tags. Under 5% shrinkage.



SANDSHELL



FOREST GREEN



FRENCH OAK



TORNADO



NAVY



HEATHER GREY



PISTACHIO



GRAPE ICE



OIL GREEN



BLACK



PEBBLE BLUE



SALMON



BURRO



MIDNIGHT NAVY



WHITE



PEANUT BUTTER



LUNAR ROCK

URBAN PULLOVER HOODIE



**Fabrication**  
3-End Fleece  
10 oz (340 GSM)

**Solids**  
80% Cotton, 20% Recycled Polyester

**Heather Grey**  
70% Cotton, 30% Recycled Polyester



WHITE



PISTACHIO



GRAPE ICE



SALMON



COLOR SHOWN:  
BURRO



PEANUT BUTTER



BLACK



BURRO



OIL GREEN



LUNAR ROCK



PEBBLE BLUE

Features

Heavyweight fleece. Side pockets with extra internal YKK Zipper for security. Elastic waistband and bottom cuff. Drawcords have metal tipping. SEAMLESS for perfect print real estate along the side of the leg. Pigment dyed (except for black and white). Tear away tags. Under 5% shrinkage.

URBAN SWEATPANTS



WATER AWARE  
PRODUCED USING  
LESS WATER



FRIENDLY FIBER  
MADE WITH  
RECYCLED POLYESTER

Fabrication

3-End Fleece

10 oz (340 GSM)

80% Cotton, 20% Recycled Polyester





# HEAVYWEIGHT COLLECTION



**Heavyweight Pullover Hoodie**  
LS19001  
Color Shown: Meerkat



**Heavyweight Pullover Hoodie**  
LS19001  
Color Shown: Lavender

Features

Double-needle topstitch at sleeve, bottom hem, shoulders and armhole. Shoulder to shoulder tape. Tear away tags. Under 6% shrinkage.



COLOR SHOWN:  
SAGE

HEAVYWEIGHT TEE

Fabrication

20 Singles  
5.6 oz (190 GSM)

Solids

100% Combed Cotton Jersey

Heathers

60% Cotton, 40% Polyester

Heather Grey

90% Cotton, 10% Polyester



SAGE



CHARCOAL HEATHER



TOASTED COCONUT



COLONY BLUE



WHITE



SPORTS GREEN



HEATHER GREY



BUBBLE GUM PINK



MUSHROOM



NAVY



SEAFOAM



NATURAL



BLACK



DUSTY BLUE



COPPER



LAVENDER



Features

Side-seamed. Double-needle topstitch at sleeves, bottom hem, and shoulders. Shoulder taping. Tear away tags. Under 6% shrinkage.



COLOR SHOWN:  
MUSHROOM

HEAVYWEIGHT LONG SLEEVE TEE

Fabrication

20 Singles  
5.6 oz (190 GSM)

Solids

100% Combed Cotton Jersey

Heather Grey

90% Cotton, 10% Polyester



MUSHROOM



HEATHER GREY



CHESTNUT



BURGUNDY



ARMY GREEN



COLONY BLUE



BLACK



WHITE



NAVY



TOASTED COCONUT



MEERKAT



HEATHER GREY



PAPRIKA



BLACK



MUSHROOM



NAVY

**Features**  
100% combed cotton face yarn. Three panel hood with fleece lining for extra comfort. Double-needle topstitch on all seams. Dyed-to-match drawcords with knotted ends and metal eyelets. Kangaroo pocket. Ribbed cuffs and waistband. Tear away tags. Under 5% shrinkage.



COLOR SHOWN:  
TOASTED COCONUT

# HEAVYWEIGHT PULLOVER HOODIE



**WATER AWARE**  
PRODUCED USING  
LESS WATER



**FRIENDLY FIBER**  
MADE WITH  
RECYCLED POLYESTER

**Fabrication**  
3-End Fleece  
10 oz (340 GSM)

**Solids**  
70% Cotton, 30% Recycled Polyester

**Heather Grey**  
65% Cotton, 35% Recycled Polyester



STORM



TEAL



WHITE



LAVENDER



SAGE



TOASTED COCONUT



# VINTAGE COLLECTION

Mineral washed and laundered for superior hand-feel.



**Vintage Raglan Hoodie**  
LST004  
Colors Shown: Vintage Camel, Cloud Purple

**Vintage Joggers**  
LST009  
Colors Shown: Vintage Camel, Vintage Mustard, Cloud Purple

**Vintage Tee**  
LST002  
Colors Shown: Vintage Black, Vintage Mustard

**Vintage Raglan Hoodie**  
LST004  
Color Shown: Cloud Black



### Features

Side Seamed. Tight-knit. Double-needle topstitched. Shoulder taping. Mineral washed. Tear away tags. Under 6% shrinkage.



COLOR SHOWN:  
VINTAGE ZINC

## VINTAGE TEE

### Fabrication

30 Singles  
4.3 oz (145 GSM)  
100% Cotton Jersey



VINTAGE BLACK



VINTAGE CAMEL



VINTAGE DENIM



VINTAGE MUSTARD



VINTAGE OLIVE



VINTAGE ZINC



CLOUD BLACK

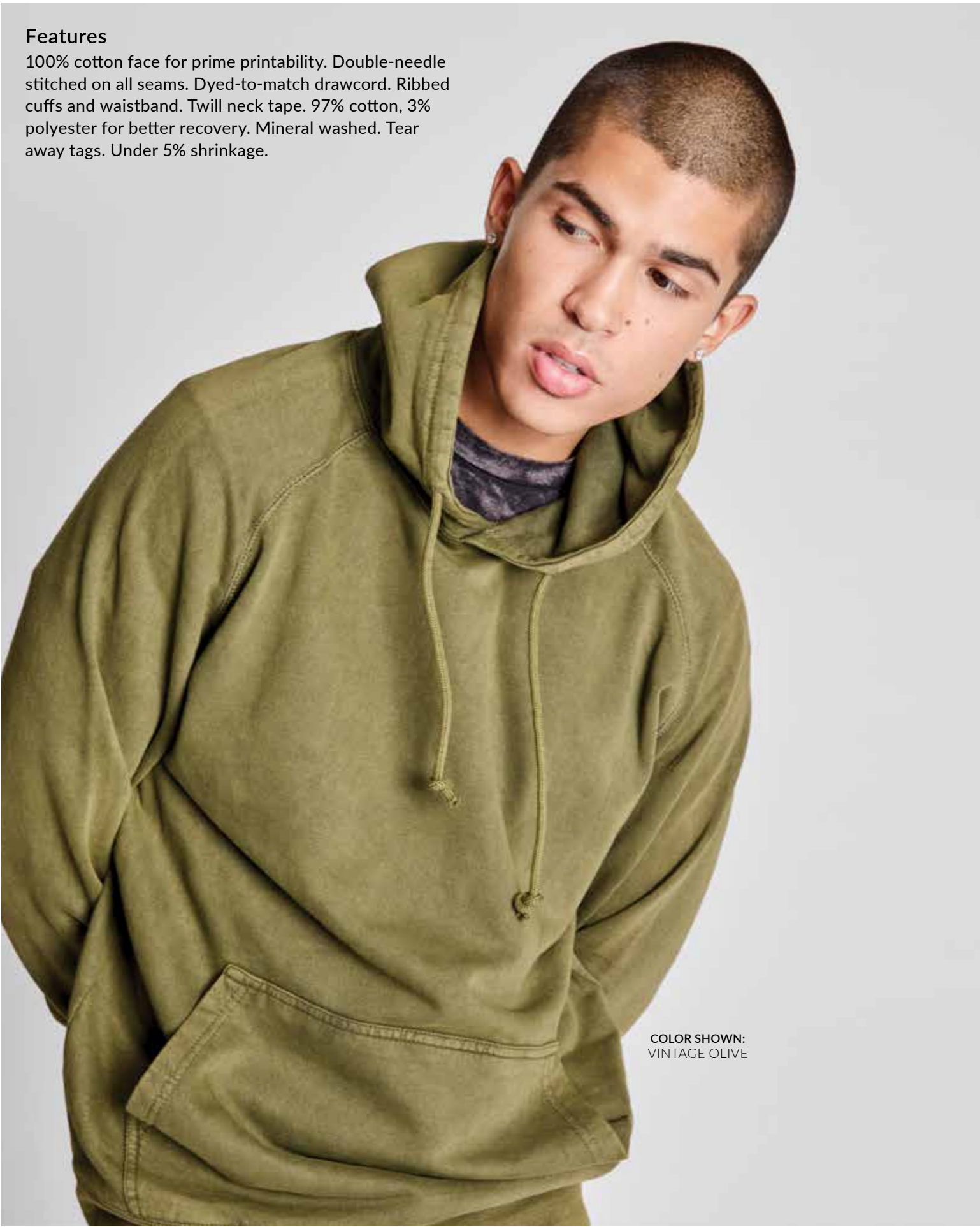


CLOUD PURPLE



Features

100% cotton face for prime printability. Double-needle stitched on all seams. Dyed-to-match drawcord. Ribbed cuffs and waistband. Twill neck tape. 97% cotton, 3% polyester for better recovery. Mineral washed. Tear away tags. Under 5% shrinkage.



COLOR SHOWN:  
VINTAGE OLIVE

VINTAGE RAGLAN HOODIE

Fabrication  
8.25 oz (280 GSM)  
100% Cotton Fleece



VINTAGE BLACK



VINTAGE MUSTARD



VINTAGE OLIVE



VINTAGE ZINC



CLOUD BLACK



CLOUD PURPLE



VINTAGE WHITE



VINTAGE DENIM



VINTAGE LAKE



VINTAGE CAMEL

Features

100% cotton face for prime printability. Side-seamed. Dyed-to-match drawcords. Back pocket and jersey-lined front pocket. Laundered for superior hand feel. Mineral washed. Tear away tags. Under 5% shrinkage.



COLOR SHOWN:  
VINTAGE BLACK

VINTAGE JOGGERS

Fabrication  
8.25 oz (280 GSM)  
100% Cotton Fleece



VINTAGE BLACK



VINTAGE MUSTARD



VINTAGE ZINC



VINTAGE OLIVE



VINTAGE DENIM



VINTAGE CAMEL



CLOUD BLACK



CLOUD PURPLE



PREMIUM  
FLEECE



**Premium Crewneck Sweatshirt**  
LS14004  
Colors Shown: Carrot, Lemon

**Premium Pullover Hoodie**  
LS14001  
Colors Shown: Purple, Ocean Blue

**Premium Crewneck Sweatshirt**  
LS14004  
Color Shown: Carrot



Features

Raw hem, dyed-to-match flat drawcord, dropped shoulders.  
Double-needle topstitch on all seams. Tear away tags.  
Under 5% shrinkage.



COLOR SHOWN:  
MAUVE

CROP HOODIE



PRODUCED USING  
LESS WATER



MADE WITH  
RECYCLED POLYESTER

Fabrication

3-End Fleece

7.05 oz (240 GSM)

85% Cotton, 15% Recycled Polyester



PALE PINK



STORM



LILAC



BLACK



MAUVE



WHITE

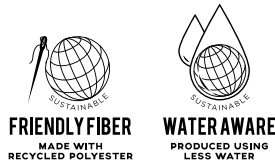


COLOR SHOWN:  
BLACK



FRENCH TERRY

**Fabrication**  
3-End French Terry  
7.4 oz (250 GSM)



**Solids**  
80% Cotton, 20% Recycled Polyester

**Heathers**  
60% Cotton, 40% Recycled Polyester

**Features**  
Double-needle topstitch on all seams. Half-moon patch on the back neck for easy relabelling. Ribbed cuffs and waistband. Twill neck tape. 100% cotton face yarn. Tear away tags. Under 5% shrinkage.



FRENCH TERRY RAGLAN CREWNECK

FRENCH TERRY HOODIE



**Features**  
Three panel hood with self-lining for extra comfort. Double-needle topstitch on all seams. Dyed-to-match drawcord with metal grommets. Half-moon patch on the back neck for easy relabelling. Twill neck tape. Tear away tags. Under 5% shrinkage.

LS13004

LS13001



COLOR SHOWN:  
RED

PREMIUM PULLOVER HOODIE



WATER AWARE  
PRODUCED USING  
LESS WATER



FRIENDLY FIBER  
MADE WITH  
RECYCLED POLYESTER

Fabrication  
3-End Fleece  
8.25 oz (280 GSM)

Solids  
80% Cotton, 20% Recycled Polyester

Heathers  
60% Cotton, 40% Recycled Polyester

Heather Grey  
70% Cotton, 30% Recycled Polyester



OCEAN BLUE



PURPLE



CARDINAL



LEMON



CARROT



ANTIQUE GOLD



HEATHER GREY



BLACK



WHITE



TRUE ROYAL



PALE PINK



Features

Three panel hood fleece lined for extra comfort. 100% cotton face. Side-seamed. Double-needle topstitch on all seams. Dyed-to-match drawcords with tipped ends and metal eyelets. Kangaroo pocket. Ribbed cuffs and waistband. Tear away tags. Under 5% shrinkage.





COLOR SHOWN:  
NAVY

COLOR SHOWN:  
TRUE ROYAL

PREMIUM YOUTH PULLOVER HOODIE



PRODUCED USING  
LESS WATER



MADE WITH  
RECYCLED POLYESTER

**Fabrication**  
3-End Fleece  
8.25 oz (280 GSM)

**Solids**  
80% Cotton, 20% Recycled Polyester

**Heathers**  
60% Cotton, 40% Recycled Polyester

**Heather Grey**  
70% Cotton, 30% Recycled Polyester



BLACK



LILAC



WHITE



HEATHER GREY



CHARCOAL HEATHER



TRUE ROYAL



PINA COLADA

Features

Two panel hood. Side-seamed. Double-needle topstitch on all seams. No drawstrings. Kangaroo pocket. Ribbed cuffs and waistband. Tear away tags. Under 5% shrinkage.



NAVY



Features

Side-seamed. YKK #5 zipper and DA8 auto-lock slider. Double-needle topstitch on all seams. Three panel hood with fleece lining for extra comfort. Matching round drawcord with tipped ends and metal eyelets. Kangaroo pockets. Ribbed cuffs and waistband. Twill neck tape. Tear away tags. Under 5% shrinkage.



COLOR SHOWN:  
NAVY

PREMIUM FULL ZIP HOODIE



PRODUCED USING  
LESS WATER



MADE WITH  
RECYCLED POLYESTER

Fabrication

3-End Fleece

8.25 oz (280 GSM)

Solids

80% Cotton, 20% Recycled Polyester

Heathers

60% Cotton, 40% Recycled Polyester

Heather Grey

70% Cotton, 30% Recycled Polyester



CHESTNUT



SANDSHELL



SEAFOAM



SPORTS GREEN



HEATHER GREY



WHITE



BLACK



TRUE ROYAL



BURGUNDY



CHARCOAL HEATHER



RED



OATMEAL HEATHER



NAVY

Features

100% cotton face. Double-needle topstitch on all seams. 1x1 ribbing at cuff and waistband. Twill neck tape. Tear away tags. Under 5% shrinkage.



COLOR SHOWN:  
LEMON

PREMIUM CREWNECK SWEATSHIRT



PRODUCED USING  
LESS WATER



MADE WITH  
RECYCLED POLYESTER

Fabrication

3-End Fleece

8.25 oz (280 GSM)

Solids

80% Cotton, 20% Recycled Polyester

Heathers

60% Cotton, 40% Recycled Polyester

Heather Grey

70% Cotton, 30% Recycled Polyester



BLACK



SEAFOAM



NAVY



SPORTS GREEN



PALE PINK



CHESTNUT



OATMEAL HEATHER



CHARCOAL HEATHER



ANTIQUE GOLD



CARROT



SANDSHELL



HEATHER GREY



OCEAN BLUE



CARDINAL



WHITE



TRUE ROYAL



PURPLE



LEMON



Features

Two panel hood with fleece lining. Side-seamed. Double-needle topstitch on all seams. Dyed-to-match drawcords with tipped ends and metal eyelets. Tear away tags. Under 5% shrinkage.

COLOR SHOWN:  
CHARCOAL HEATHER



FUTURE FLEECE HOODIE



Fabrication  
3-End Fleece  
7.96 oz (270 GSM)  
Regenerated Fleece  
55% Cotton, 45% Polyester



BLACK



HEATHER GREY



CHARCOAL HEATHER



NAVY



COLOR SHOWN:  
CHESTNUT



HEATHER GREY



NAVY



CHESTNUT



CHARCOAL HEATHER



RED



SEAFOAM



ARMY GREEN



BURGUNDY



BLACK



WHITE



SANDSHELL

# PREMIUM FLEECE JOGGERS



**WATER AWARE**  
PRODUCED USING  
LESS WATER



**FRIENDLY FIBER**  
MADE WITH  
RECYCLED POLYESTER

**Fabrication**

3-End Fleece

8.25 oz (280 GSM)

**Solids**

80% Cotton, 20% Recycled Polyester

**Heathers**

60% Cotton, 40% Recycled Polyester

**Heather Grey**

70% Cotton, 30% Recycled Polyester

**Features**

Gusset insert for drop-crotch feel. Side-seamed. Ribbed bottom cuffs and waistband, drawstring at waist. Two side pockets and back pocket. Tear away tags. Under 5% shrinkage.



JERSEY  
COLLECTION



**Deluxe CVC Tee**  
LS15000CVC  
Color Shown: Black Heather

**Deluxe Tee**  
LS15000  
Color Shown: Heather Grey



Features

Side-seamed. Double-needle topstitch at sleeve, bottom hem, shoulders and armhole. Shoulder taping. Tear away tags. Under 6% shrinkage.



COLOR SHOWN:  
RED

DELUXE TEE

Fabrication

30 Singles  
4.3 oz (145 GSM)

Solids

100% Combed Cotton Jersey

Heather Grey

90% Cotton, 10% Polyester



WHITE



ARMY GREEN



BLACK



MUSHROOM



MUSTARD



NAVY



BLUE MIST



CHESTNUT



LILAC



PALE PINK



RED



TRUE ROYAL



BURGUNDY



HEATHER GREY



Features

Side-seamed. Double-needle stitch at sleeve and bottom hem. Shoulder taping. Tear away tags. Under 6% shrinkage.



COLOR SHOWN:  
OLIVE HEATHER

DELUXE CVC TEE

Fabrication

30 Singles  
4.3 oz (145 GSM)  
Ringspun CVC Blend

Heathers

60% Cotton, 40% Polyester

Black Heather

90% Cotton, 10% Polyester

Oatmeal Heather

99% Cotton, 1% Polyester



BLACK HEATHER



OATMEAL HEATHER



NAVY HEATHER



BURGUNDY HEATHER



BROWN HEATHER



OLIVE HEATHER



# CUSTOM MANUFACTURING

From development to delivery.

## DESIGN

Our goal is to help bring your concept from design to final product. We offer many customizations to help you do that, including:

- Sourcing Fabrications
- Printing & Embroidery
- Custom Colors
- Trims
- Labelling & Packaging

## LEAD TIMES

Our lead times are competitive and our team will work with you to meet your delivery needs. Our factories are vertically integrated, and you will have full visibility on production stages. Lead times can also depend on the product design and quantity.

We are here to bring your vision to life and maintain great efficiency to make sure you receive your products in a timely manner.

## MINIMUMS

Minimums are based on custom style and fabrication offered.

You have the flexibility to order as many quantities as you want. Speak to a Lane Seven sales representative for more details.



## PRICE

We have strong relationships with our factories, and as a result, we have an edge on quality, consistency, and can offer you the best prices in the market.



MEASUREMENTS ARE IN INCHES • BASED ON FLAT MEASUREMENTS

Style Number		XS	S	M	L	XL	2XL	3XL	4XL
<b>LS11001</b> NANTUCKET PULLOVER HOODIE	CHEST	18	20	22	24	26	28	30	X
	LENGTH <small>(Measured from HPS)</small>	26	27	28	29	30	31	32	X
<b>LS11004</b> NANTUCKET CREWNECK SWEATSHIRT	CHEST <small>(1" below armhole)</small>	18	20	22	24	26	28	30	X
	LENGTH <small>(Measured from HPS)</small>	26	27	28	29	30	31	32	X
<b>LS12000</b> CROP HOODIE	CHEST <small>(1" below armhole)</small>	20	22	24	26	X	X	X	X
	LENGTH <small>(Measured from HPS)</small>	17.5	18.5	19.5	20.5	X	X	X	X
<b>LS13001</b> FRENCH TERRY HOODIE	CHEST <small>(1" below armhole)</small>	19.75	20.75	21.75	22.75	23.75	24.75	25.75	X
	LENGTH <small>(Measured from HPS)</small>	25.5	26.5	27.5	28.5	29.5	30.5	31.5	X
<b>LS13004</b> FRENCH TERRY RAGLAN CREWNECK	CHEST <small>(1" below armhole)</small>	19.5	20.5	21.5	22.5	23.5	24.5	25.5	X
	LENGTH <small>(Measured from HPS)</small>	25.5	26.5	27.5	28.5	29.5	30.5	31.5	X
<b>LS14001</b> PREMIUM PULLOVER HOODIE	CHEST <small>(1" below armhole)</small>	18	20	22	24	26	28	30	32
	LENGTH <small>(Measured from HPS)</small>	26	27	28	29	30	31	32	33
		<i>*4XL only available in select colors</i>							
<b>LS14001YH</b> PREMIUM YOUTH PULLOVER HOODIE	CHEST <small>(1" below armhole)</small>	14	16	18	20	22	X	X	X
	LENGTH <small>(Measured from HPS)</small>	20	21	23	25	27	X	X	X
<b>LS14003</b> PREMIUM FULL ZIP HOODIE	CHEST <small>(1" below armhole)</small>	18	20	22	24	26	28	30	X
	LENGTH <small>(Measured from HPS)</small>	26	27	28	29	30	31	32	X
<b>LS14004</b> PREMIUM CREWNECK SWEATSHIRT	CHEST <small>(1" below armhole)</small>	18	20	22	24	26	28	30	X
	LENGTH <small>(Measured from HPS)</small>	26	27	28	29	30	31	32	X
<b>LS15000</b> DELUXE TEE	CHEST <small>(1" below armhole)</small>	16	18	20	22	24	26	28	30
	LENGTH <small>(Measured from HPS)</small>	27	28	29	30	31	32	33	34
		<i>*4XL only available in select colors</i>							
<b>LS15000CVC</b> DELUXE CVC TEE	CHEST <small>(1" below armhole)</small>	16	18	20	22	24	26	28	X
	LENGTH <small>(Measured from HPS)</small>	27	28	29	30	31	32	33	X
<b>LS15001</b> HEAVYWEIGHT TEE	CHEST <small>(1" below armhole)</small>	16.5	18.5	20.5	22.5	24.5	26.5	28.5	30.5
	LENGTH <small>(Measured from HPS)</small>	28	29	30	31	32	33	34.5	35.5
		<i>*4XL only available in select colors</i>							

Please note that the above sizing charts are subject to change.  
For more detailed information, please contact a Lane Seven Customer Service Representative.

MEASUREMENTS ARE IN INCHES • BASED ON FLAT MEASUREMENTS

Style Number		XS	S	M	L	XL	2XL	3XL	4XL
<b>LS15009</b> HEAVYWEIGHT LONG SLEEVE TEE	CHEST	17	18	20	22	24	26	28	X
	LENGTH <small>(Measured from HPS)</small>	27.5	28.5	29.5	30.5	31.5	32.5	33.5	X
<b>LS16001</b> URBAN PULLOVER HOODIE	CHEST <small>(1" below armhole)</small>	18	20	22	24	26	28	30	X
	LENGTH <small>(Measured from HPS)</small>	26	27	28	29	30	31	32	X
<b>LS16004</b> URBAN CREWNECK SWEATSHIRT	CHEST <small>(1" below armhole)</small>	18	20	22	24	26	28	30	X
	LENGTH <small>(Measured from HPS)</small>	26	27	28	29	30	31	32	X
<b>LS16005</b> URBAN HEAVY TEE	CHEST <small>(1" below armhole)</small>	18.5	20.5	22.5	24.5	26.5	28.5	30.5	X
	LENGTH <small>(Measured from HPS)</small>	25	26	27	28	29	30	31	X
<b>LS16006</b> URBAN SWEATPANTS	WAIST	28	30	32	34	36	38	40	X
	INSEAM	29	29	29	29	29	29	29	X
	OUTSEAM	40.5	41	41.5	42	42.5	43	43.5	X
<b>LS17001</b> HEAVY CORE HOODIE	CHEST <small>(1" below armhole)</small>	18	20	22	24	26	28	30	X
	LENGTH <small>(Measured from HPS)</small>	26	27	28	29	30	31	32	X
<b>LS17005</b> HEAVY CORE TEE	CHEST <small>(1" below armhole)</small>	18.5	20.5	22.5	24.5	26.5	28.5	30.5	X
	LENGTH <small>(Measured from HPS)</small>	27	28	29	30	31	32	33	X
<b>LS18002</b> FUTURE FLEECE HOODIE	CHEST <small>(1" below armhole)</small>	18	20	22	24	26	28	30	X
	LENGTH <small>(Measured from HPS)</small>	26	27	28	29	30	31	32	X
<b>LS19001</b> HEAVYWEIGHT PULLOVER HOODIE	CHEST <small>(1" below armhole)</small>	20.5	21	23	24.5	26.5	27.5	28.5	X
	LENGTH <small>(Measured from HPS)</small>	27.5	28.5	29.5	30.5	31.5	32.5	33.5	X
<b>LST002</b> VINTAGE TEE	CHEST <small>(1" below armhole)</small>	16	18	20	22	24	26	28	X
	LENGTH <small>(Measured from HPS)</small>	27	28	29	30	31	32	33	X
<b>LST004</b> VINTAGE RAGLAN HOODIE	CHEST <small>(1" below armhole)</small>	18	20	22	24	26	28	30	X
	LENGTH <small>(Measured from HPS)</small>	26	27	28	29	30	31	32	X
<b>LST006</b> PREMIUM FLEECE JOGGER	WAIST	28	30	32	34	36	38	40	X
	INSEAM	28	29	30	31	32	33	34	X
	OUTSEAM	38	39	40	41	42	43	44	X
<b>LST009</b> VINTAGE JOGGERS	WAIST	28	30	32	34	36	38	40	X
	INSEAM	28	29	30	31	32	33	34	X
	OUTSEAM	38	39	40	41	42	43	44	X

Please note that the above sizing charts are subject to change.  
For more detailed information, please contact a Lane Seven Customer Service Representative.

**CORPORATE OFFICE / SALES / WAREHOUSE**

**LOS ANGELES, CA**

5082 4th Street  
Irwindale, California 91706

**GASTONIA, NC**

3145 Aberdeen Blvd, Ste 400  
Gastonia, North Carolina 28054

[www.lanesevenapparel.com](http://www.lanesevenapparel.com)  
@lane7apparel

ASI #: 66246  
PPAI #: 630869

**You can also find us at:**



**UNITED**BLANKS



# NOTES

 LANE SEVEN

